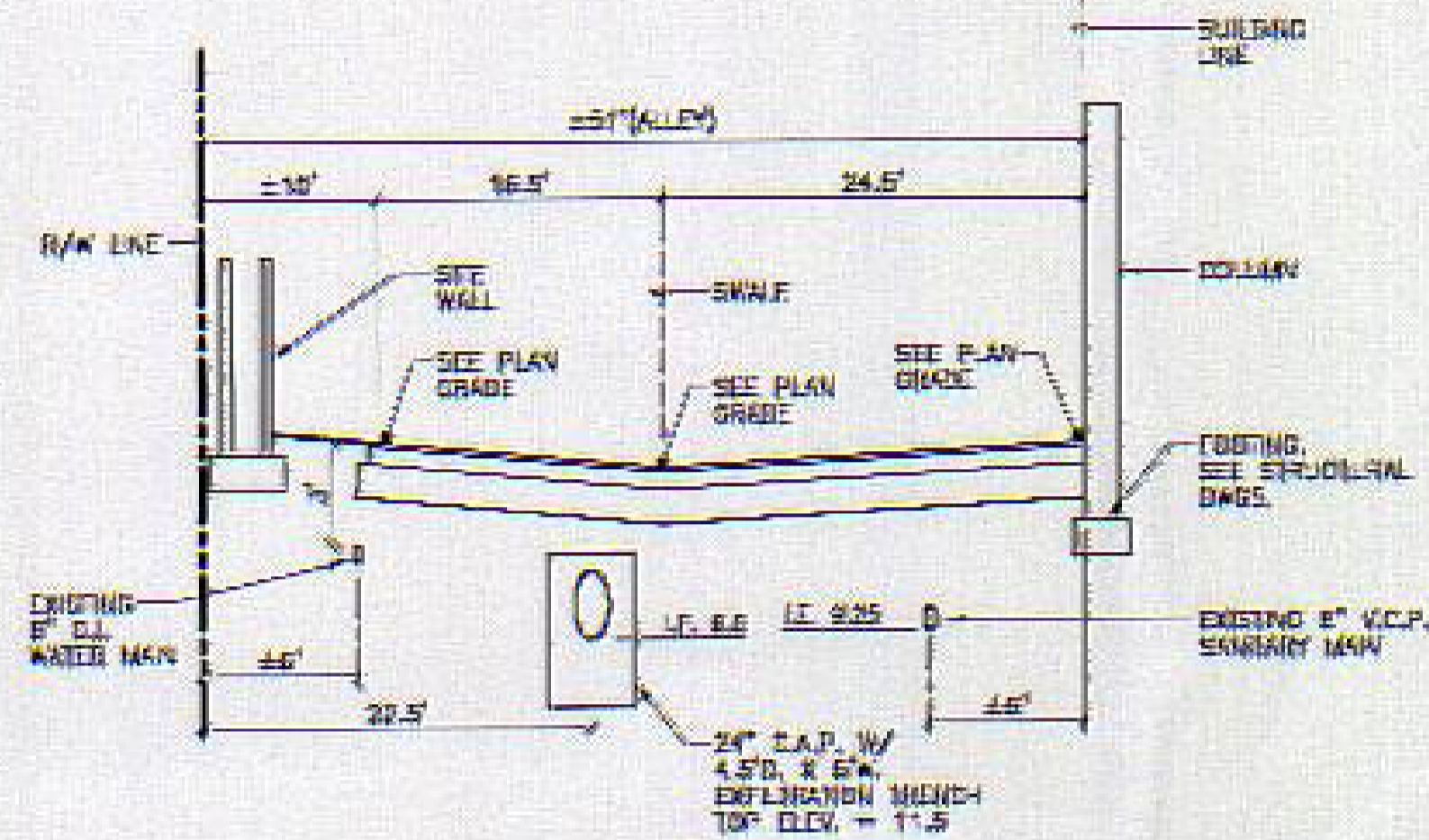


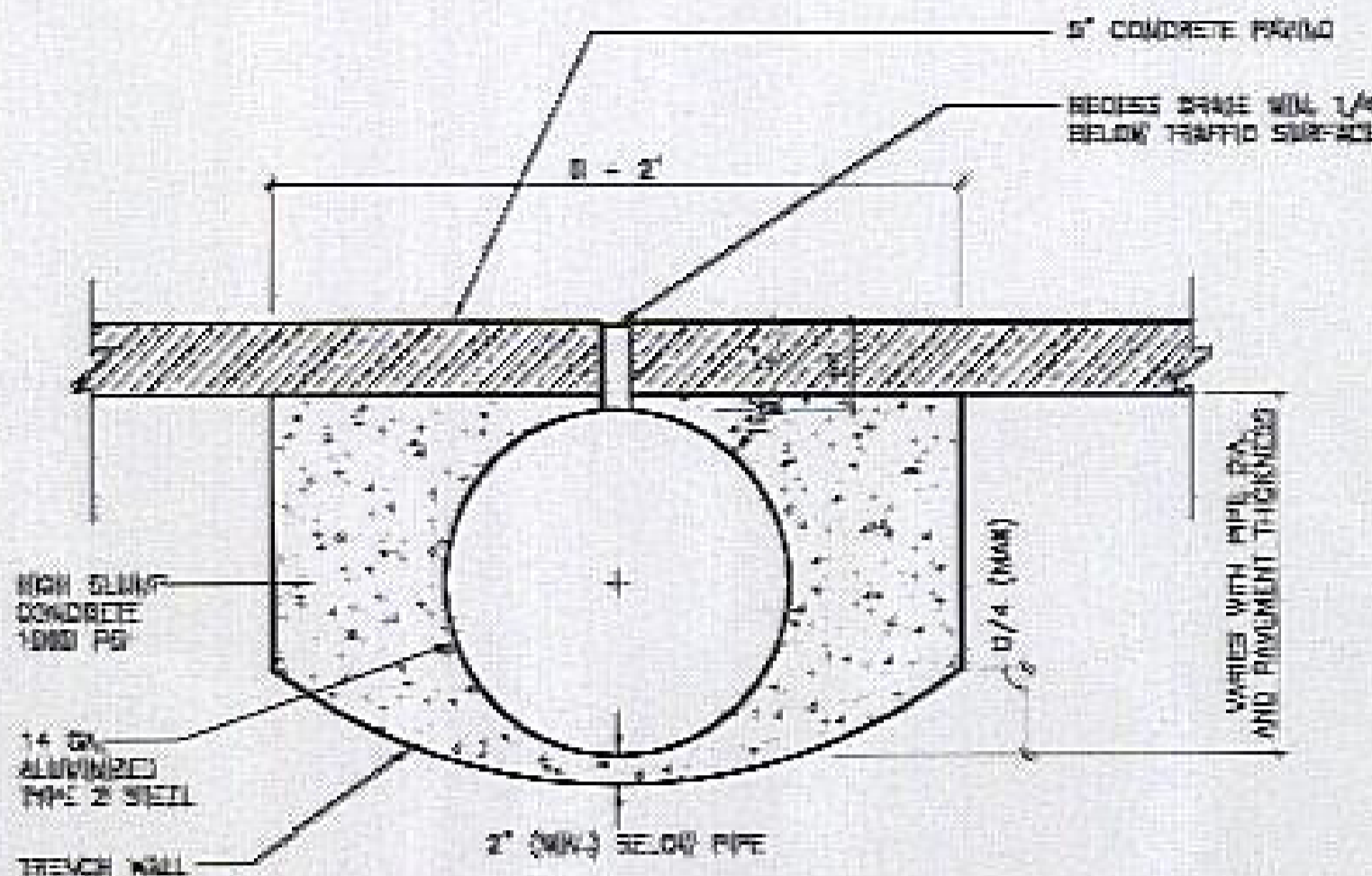
SECTION A-A

SCALE: HORIZ. 1/8" = 1'-0"
VERT. 1/8" = 1'-0"



SECTION B-B

SCALE: HORIZ. 1/8" = 1'-0"
VERT. 1/8" = 1'-0"

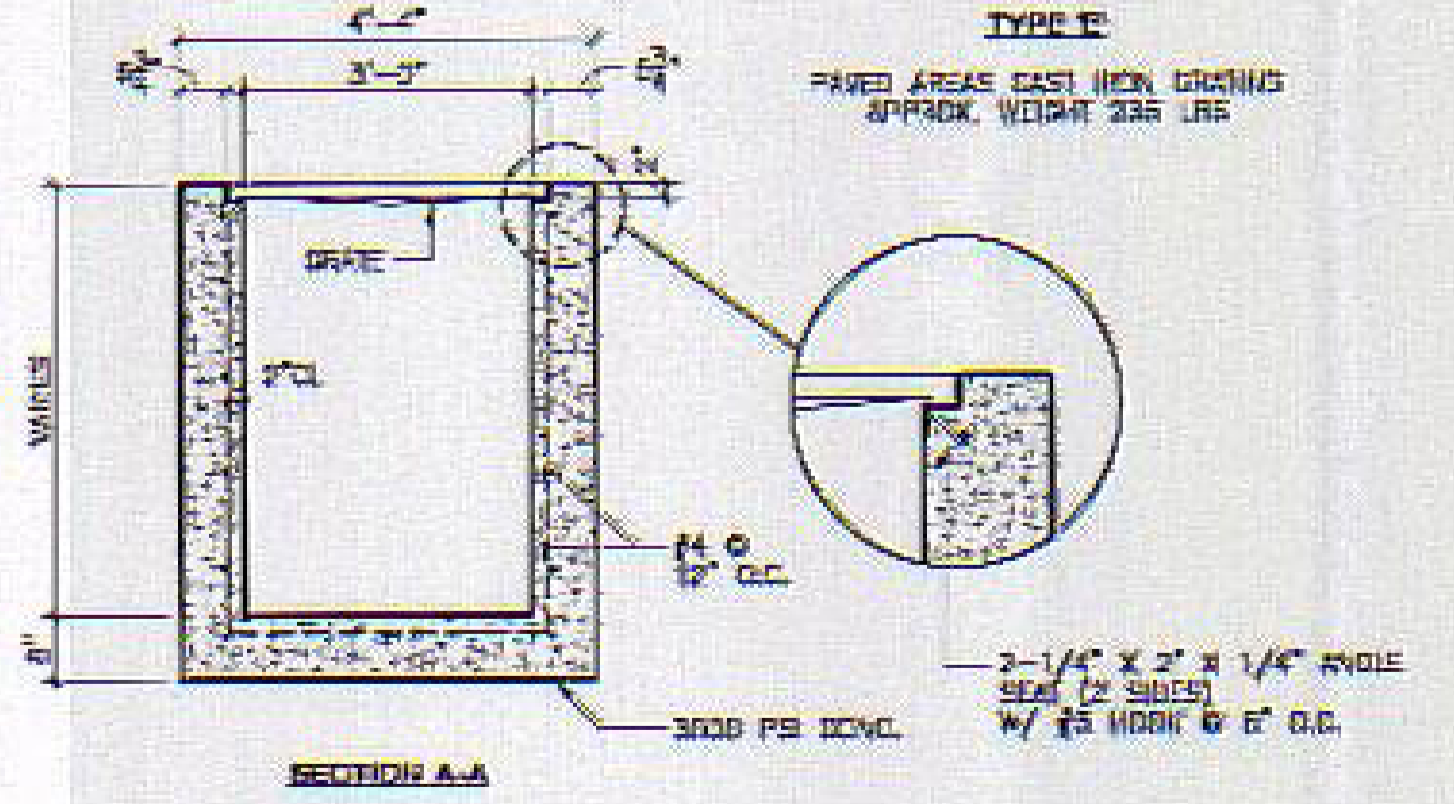
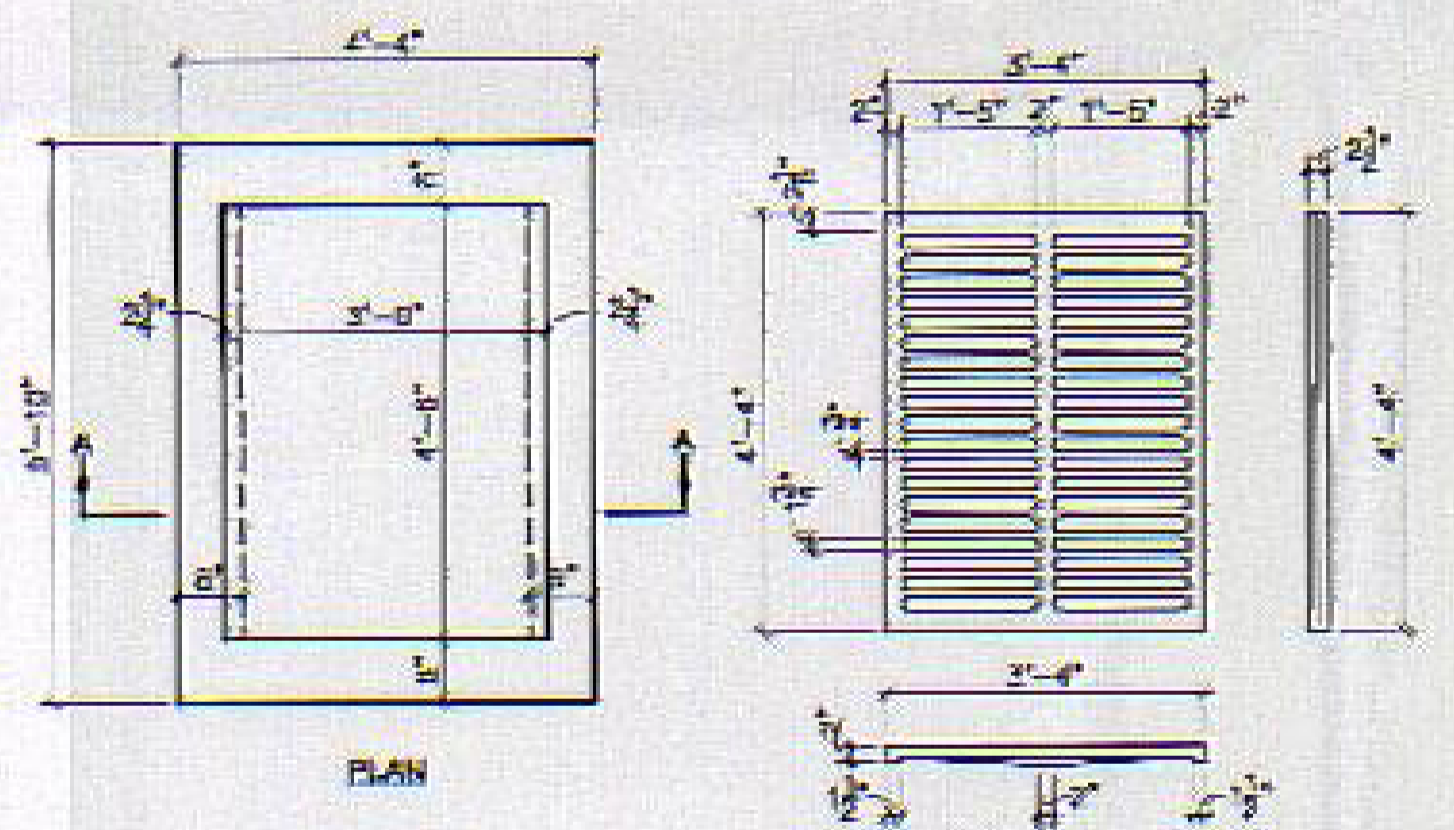


- 5" MINIMUM GRADE DEPTH, WITH DOUBLE THE STANDARD WELDING TO PIPE AND ANY FLANGE EXTENSIONS.
- GRADE RECESSED 1/4" MINIMUM BELOW TRAFFIC SURFACE

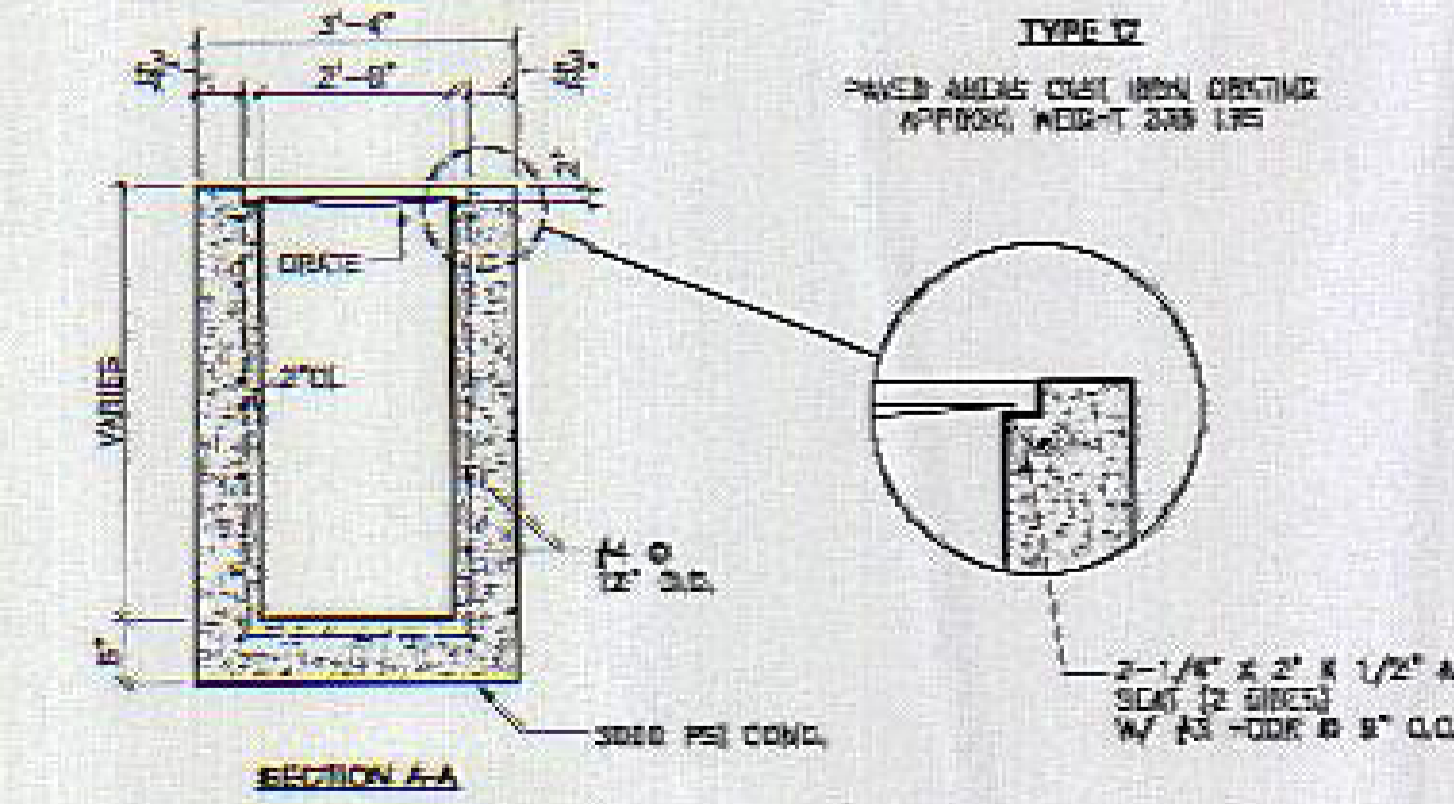
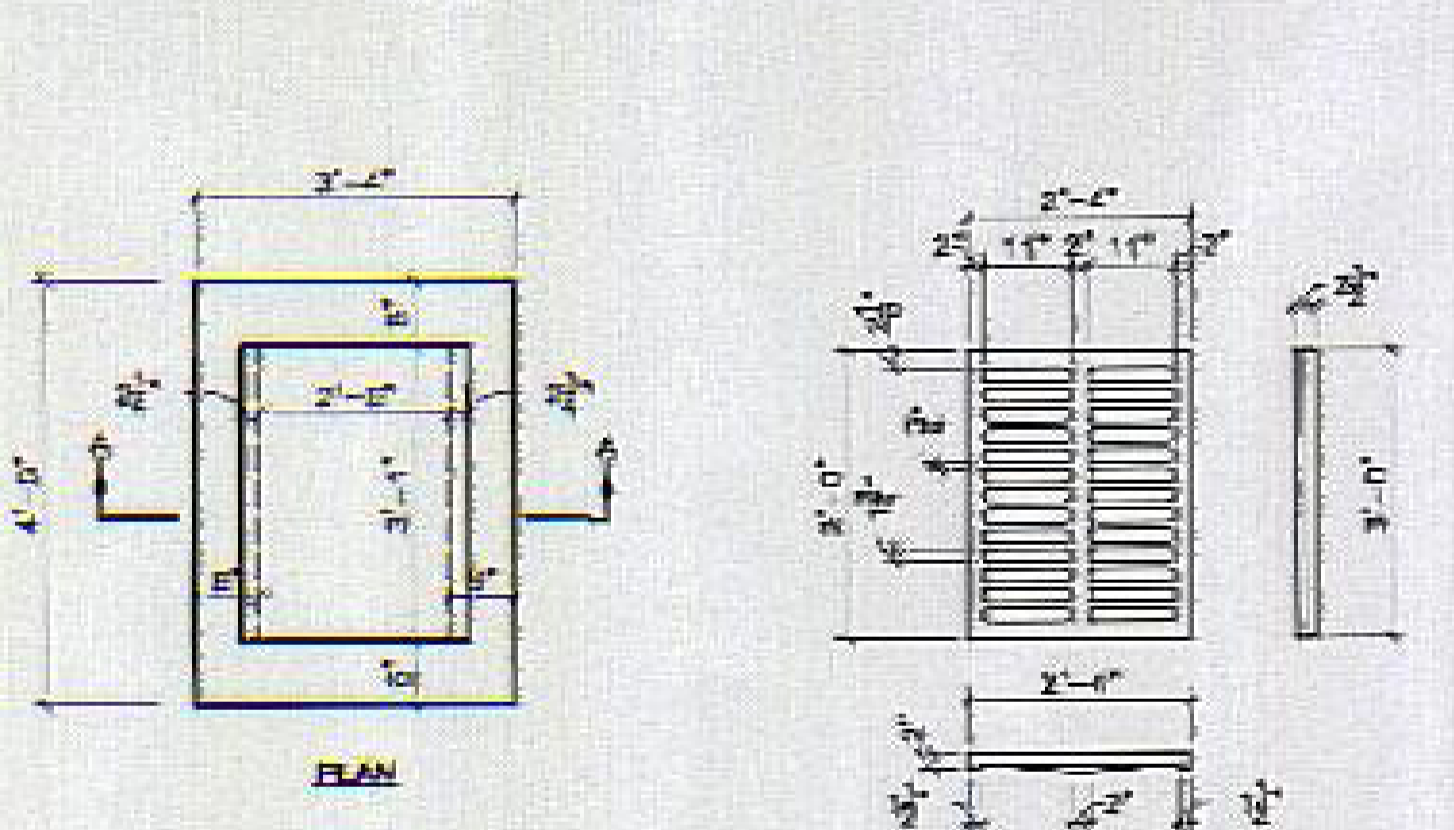
SLOTTED DRAIN CROSS SECTION

SLOTTED DRAIN SPECIFICATION

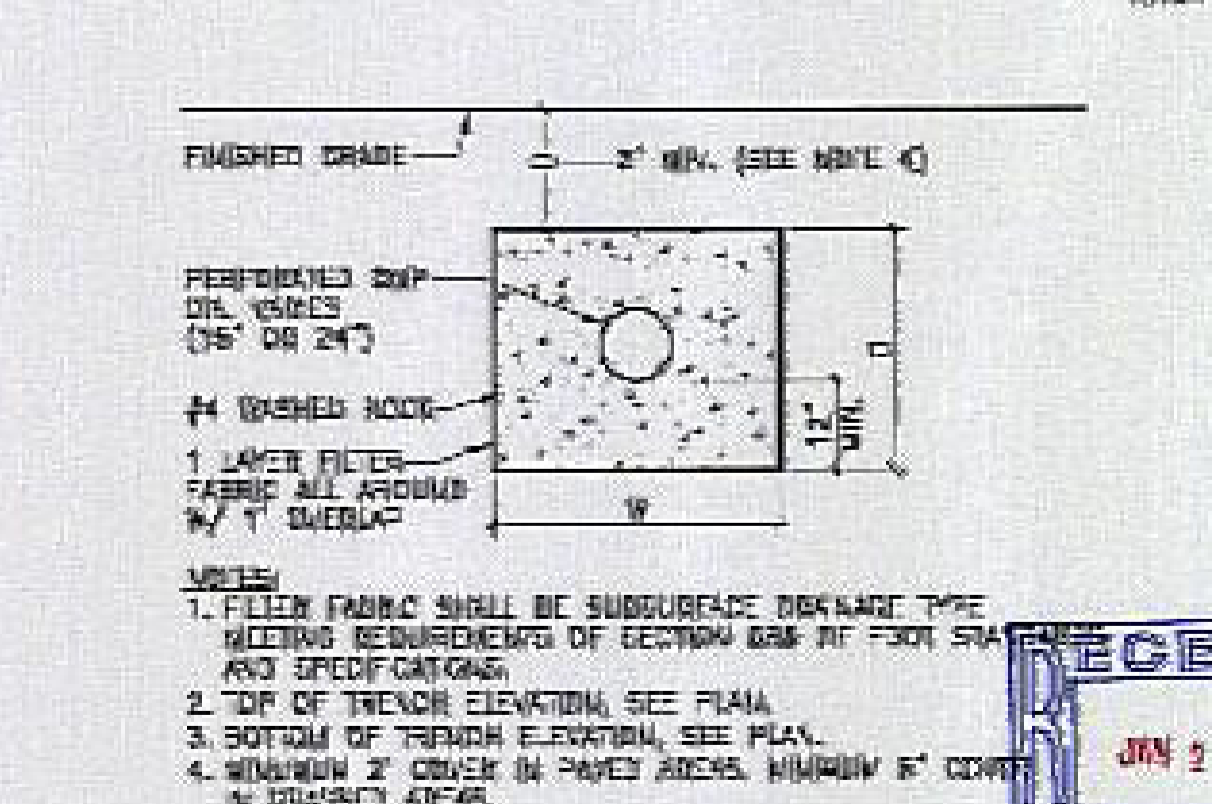
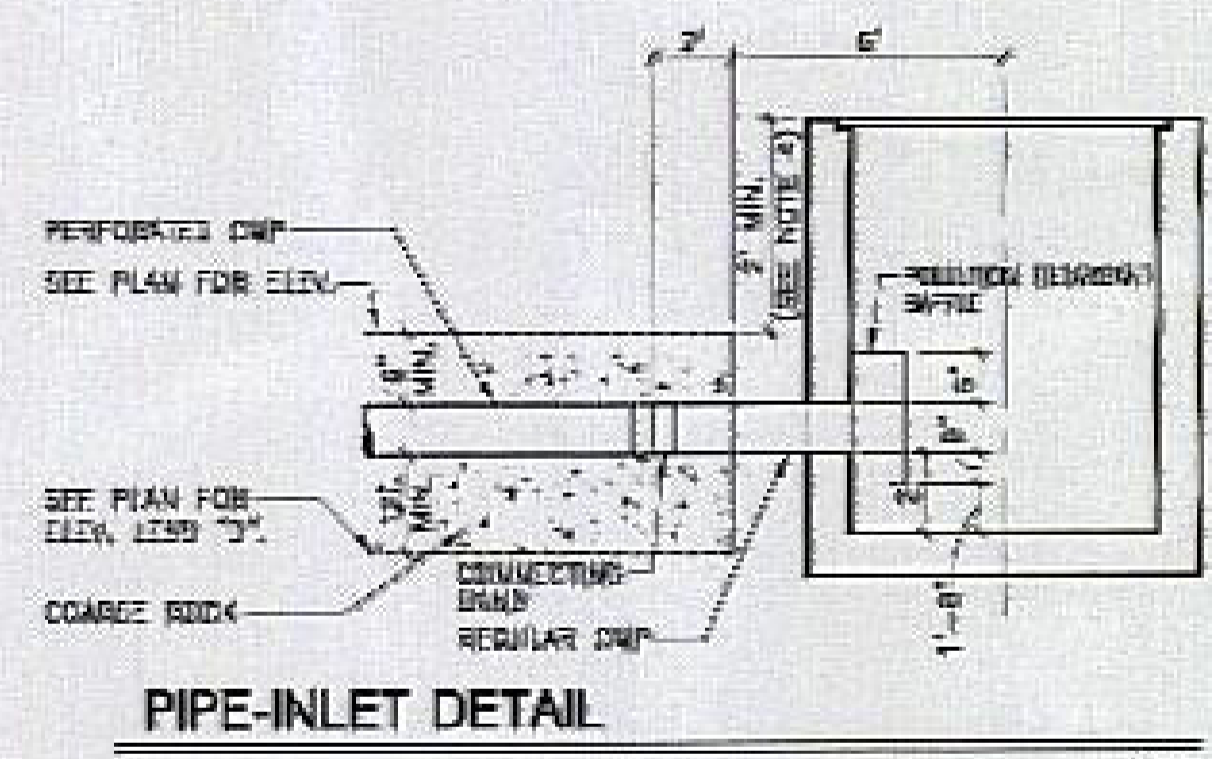
- 1.0 GENERAL
- 1.1 THIS SPECIFICATION COVERS SLOTTED DRAIN USED FOR REMOVAL OF WATER AS SHOWN ON THE PLANS.
 - 1.2 THE CORRUGATED STEEL PIPE USED IN THE SLOTTED DRAIN SHALL MEET THE REQUIREMENTS OF AASHTO M 288/ASTM A 788. THE CSP SHALL BE MADE OF ALUMINIZED STEEL TYPE 2 (AAS-10 M274). THE DIAMETER AND GRADE SHALL BE AS SHOWN ON THE PLANS.
- 2.0 CONNECTIONS
- 2.1 THE CSP SHALL HAVE A MINIMUM OF TWO REINFORCED ANGULAR ENDS.
 - 2.2 THE SLOTTED DRAIN BRIDGE SHALL BE REINFORCED BRIDGE TO SECURE THE PIPE AND PREVENT INFILTRATION OF GROUNDWATER.
 - 2.3 WHEN THE SLOTTED DRAIN IS BRIDGED TOGETHER, THE ADJACENT GRATES SHALL HAVE A MINIMUM 3-INCH GAP.
- 3.0 GRATES
- 3.1 THE GRATES SHALL BE MANUFACTURED FROM ASTM A 362, DRILL 36 OR ASTM A 36, STEEL. THE SPACERS AND SIDE PLATES SHALL BE 3/16-INCH MATERIAL. EDGE DIMENSIONS SHALL BE MINIMUM 7/16 INCH AND WIDE FROM ASHP A 281 ON THE ABOVE MATERIALS.
 - 3.2 THE SPACER PLATES SHALL BE ON 8-INCH SPACING AND WELDED ON BOTH SIDES TO EACH BEARING PLATE (SIZES WITH FOUR 1/4-INCH-LONG 3/16-INCH FILLET WELDS ON EACH SIDE OF THE BEARING PLATE).
 - 3.3 THE ENGINEER MAY CALL FOR TENSILE STRENGTH TEST ON THE GRATE IF THE GRATE IS NOT A COM-PLIMENT WITH 3.1 AND 3.2. IF TENSILE STRENGTH TESTS ARE CALLED FOR, MINIMUM RESULTS FOR AN IN-PLACE SPACER PLATE FILLED PER-PENDICULAR TO THE BEARING PLATE SHALL BE:
 - T = 13,000 POUNDS FOR 2 1/2-INCH GRATE
 - T = 15,000 POUNDS FOR 8-INCH GRATE
 - 3.4 THE GRATES SHALL BE TRAPEZOIDAL WITH A 3/4-INCH SPACING AT THE TOP AND 3/8-INCH SPACING PLACES UNLESS SHOWN OTHERWISE ON THE PLANS. THE GRATE SHALL BE 3 INCHES HIGH AS SHOWN ON THE PLANS.
- 4.0 BALANCEMENT
- 4.1 THE GRATE SHALL BE BALANCEMENT IN ACCORDANCE WITH ASTM A 123 EXCEPT WITH A 2-DUNGE GALVANIZED COATING.
- 5.0 GRATE ATTACHED TO CSP
- 5.1 THE GRATE SHALL BE FILLET WELDED A MINIMUM 1-INCH LONG TO THE CSP ON EACH SIDE OF THE GRATE AT EVERY CONNECTION.
- 6.0 TOLERANCES - FINISHED SLOTTED DRAIN GRATES - 24-FEET LENGTH
- 6.1 VERTICAL SIZE ± 3/8 INCH
 - 6.2 HORIZONTAL SIZE ± 3/8 INCH
 - 6.3 THICK ± 1/2 INCH



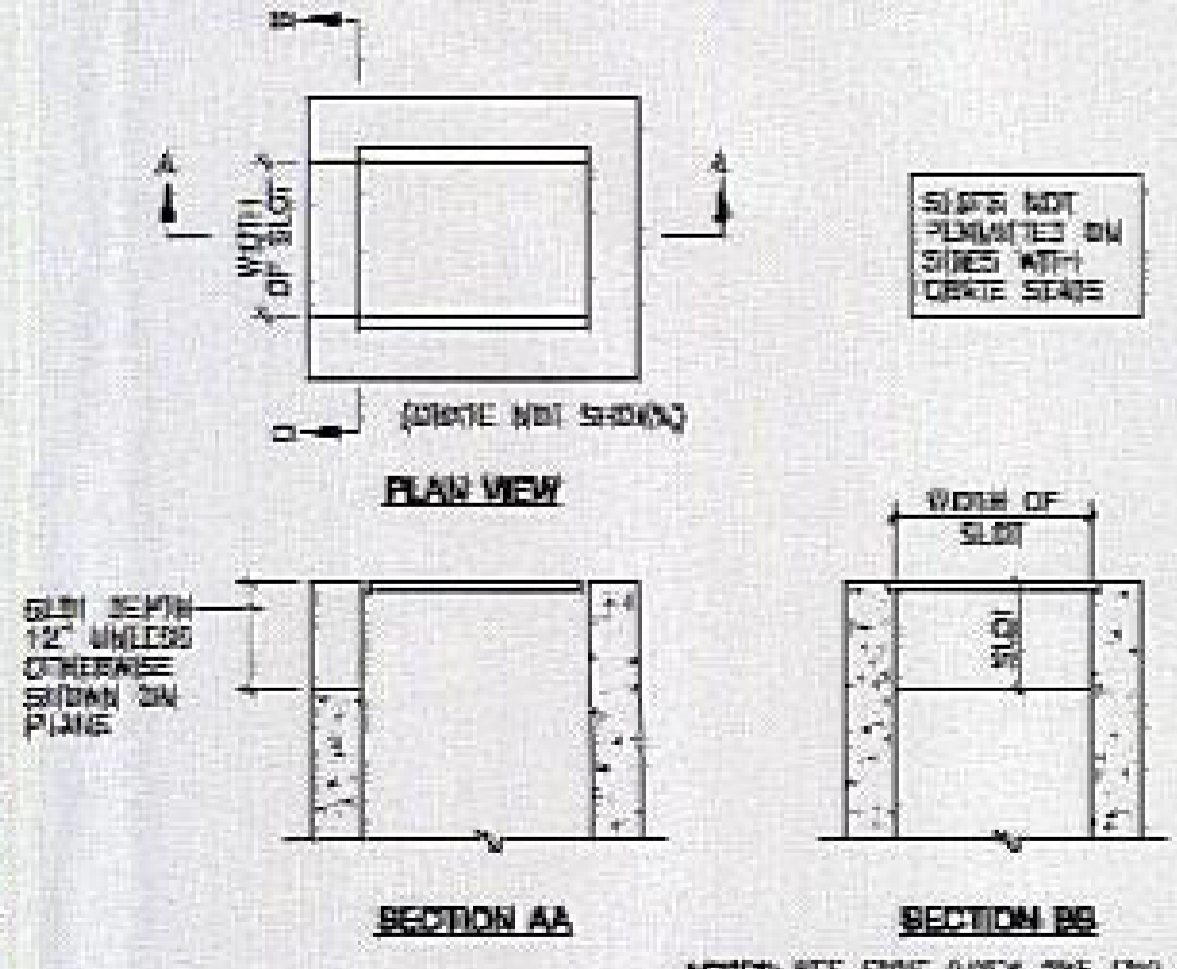
1 TYPE 'E' INLET SCALE: 1/2" = 1'-0"



2 TYPE 'C' INLET SCALE: 1/2" = 1'-0"



3 EXFILTRATION TRENCH DETAIL



4 NON-TRAVERSABLE SLOT DETAIL

THIS DRAWING IS UNLAWFUL TO COPY, ALTER, REPRODUCE OR TRANSMIT IN ANY MANNER WITHOUT WRITTEN PERMISSION FROM AHRENS COMPANIES.

AHRENS COMPANIES

DESIGN/BUILD - GENERAL CONSTRUCTION

OFFICE: 605-363-3333
1461 WILMINGTON ROAD, LAKE PARK, FL 33403-1811

PROJECT: PROPOSED'S
JACOBY PROPERTIES

PROPOSED MIXED USE DEVELOPMENT
ONE PARK PLACE
 PARK AVENUE
 LAKE PARK, FLORIDA

DATE: 07-14-08
 SCALE: AS SHOWN
 DRAWN BY: [REDACTED]
 CHECK BY: [REDACTED]
 SHEET: 104
 OF: 8 SHEETS