

RFQ No. 103-2015

PROFESSIONAL CONSULTANT SERVICES

About Us

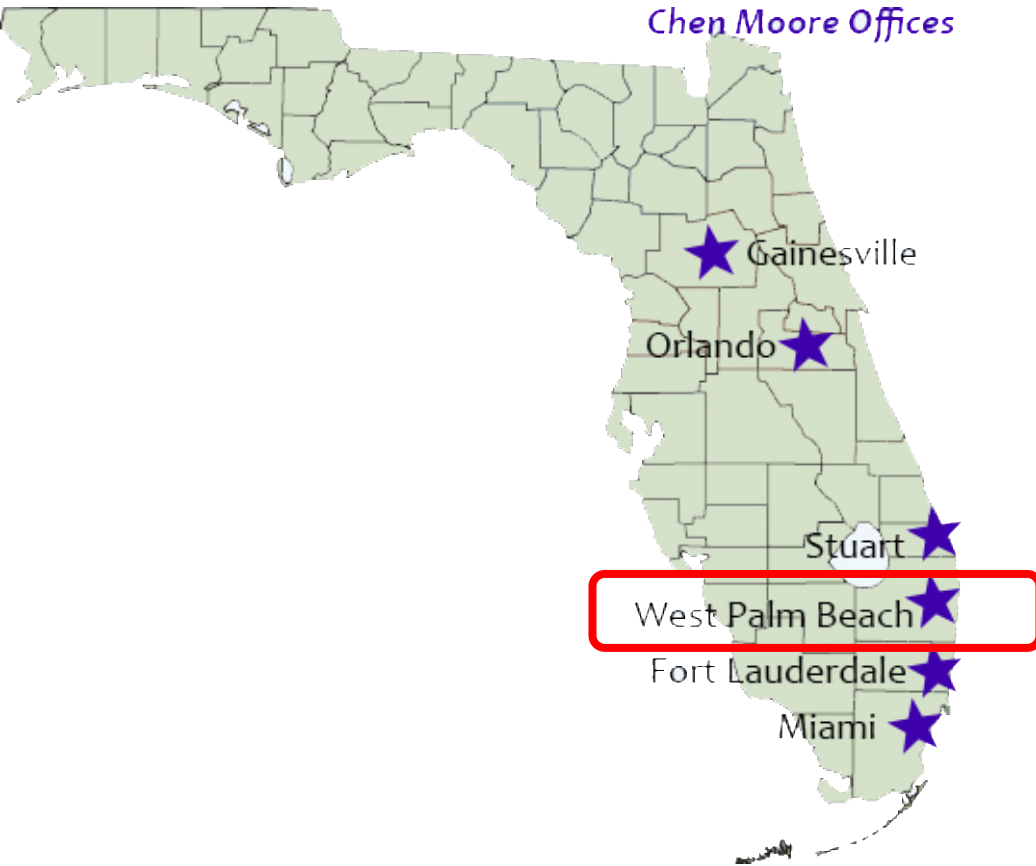
About Us

- FOUNDED IN 1986
- 50+ EMPLOYEES
- SIX FLORIDA OFFICES:
 - WPB - FTL - MIA - STU - ORL - GVN
- MULTI-DISCIPLINARY CONSULTING FIRM
- ENGINEERING – LANDSCAPE ARCHITECTURE – PLANNING – GIS MAPPING + ANALYSIS – CONSTRUCTION ENGINEERING INSPECTION

‘Your Trusted Advisor for Infrastructure and Planning Needs’

Location

7 Offices Total, 6 Offices in Florida



LOCATED 6.5 MILES FROM TOWN OF LAKE PARK

Continuing Service Contracts



Over 40 Firm-Wide

Current Local Continuing Service Contracts

- Riviera Beach Public Works
- South Martin Regional Utility
- Martin County Engineering
- Town of Palm Beach

Recent Local Continuing Service Contracts

- Riviera Beach Utility District
- City of West Palm Beach
- Town of Jupiter
- City of Boca Raton

City Engineer & Support Contracts



City Engineer Contracts

- City of Coral Springs (2005-Present)
- City of Wilton Manors (2008-Present)
- Town of Lauderdale-by-the-Sea (2007-2013)

Engineering Support Contracts

- City of Pompano Beach (NPDES/CRS Support)
- City of Hallandale Beach (Plan Review)
- SFWMD (Plan Review)
- City of West Palm Beach (FEMA Map Support)
- Village of Pinecrest (Plan Review)
- Town of Hillsboro Beach (Flood Plan Review)



Our Team

Our Team



SUZANNE DOMBROWSKI
P.E.

Team Leader/Project Manager

- Over 10 Years of Experience/ME Degree
- Neighborhood improvement projects including sewer, drainage and roadway design and permitting
- Manage utility coordination projects for Riviera Beach Utility District, including the water and sewer designs, permitting and CEI
- Project manager for Town of Palm Beach continuing services contract; projects included roadway, drainage, and creation of the Public Works Atlas



PETER MOORE
P.E., LEED AP

Project Principal

- Responsible for over \$500M of construction as EOR, or project principal
- City Engineer for City of Coral Springs for over 10 years
- Experience includes sanitary collection improvements, pump station rehabilitation, transportation engineering enhancements, water and reclaimed water consulting along with all other phases of civil engineering design and neighborhood improvements









ERIC HARRISON
RLA

Landscape Architect/Planning Support

- 13 years of landscape architecture experience with several municipalities throughout South Florida
- Has provided design services for parks and recreation, university campuses, K-12 education, corporate office, commercial developments and healthcare facilities

Our Team

Key Personnel		Role	Key Personnel		Role
Jason McClair P.E., LEED AP, CFM		Engineering Support	Teresa Mills		Engineering Support
Paula Fonseca P.E.		Engineering Support	Andrew Savage, E.I.		Engineering Support
Michael Wood		Engineering Support	Cris Betancourt, RLA		Landscape Architecture & Planning

Our Team



AVIROM AND ASSOCIATES, INC..
SURVEY

- Founded in 1981
- 29 employees (seven crews) and six Registered Professional Land Surveyors
- offices in Boca Raton, Key West and Stuart, Florida



SMITH ENGINEERING CONSULTANTS
ELECTRICAL ENGINEERING

- Power, controls, lighting, HVAC, plumbing, fire protection, instrumentation, SCADA and telemetry design, and construction observation services
- Electric utility, water, wastewater, solid waste, industrial facilities, educational facilities, transportation (highway and airports),



COLLECTIVE WATER RESOURCES
FEMA RESPONSE EFFORTS

- Small, woman-owned water resources engineering firm
- Founded in 2012
- Specializes in creative approaches to watersheds, water supplies, and practical models

Our Team



FLORIDA TECHNICAL CONSULTANTS
GIS ANALYSIS AND MAPPING

- Founded in 2014
- 25 years of engineering experience internationally and domestically
- Program management experience with water, sewer, stormwater and streetscape design projects

Right Size

Chen Moore as a Whole

- Founded in 1986
- 51 Staff
- 17 Licensed Professionals
- 14 Licensed Engineers

Chen Moore Treasure Coast

- Founded in 2003 & 2011
- 9 Staff
- 4 Licensed Professionals
- 2 Licensed Engineers

Chen Moore West Palm Beach

- Founded in 2003
- 6 Staff
- 2 Licensed Professionals
- 2 Licensed Engineers

LOCAL LEADERSHIP, REGIONAL SUPPORT, LARGE RESOURCES

Client Questions

Site Plan Review Process

- Multidisciplinary approach
- Pre-application meeting
- NPDES-SPPP Reviews / NPDES Stormwater Inspector Trainer on staff
- Adequate information on plans, details, elevations and cross sections
- Constructability
- Stormwater calculations and pipe sizing



Availability / Workload

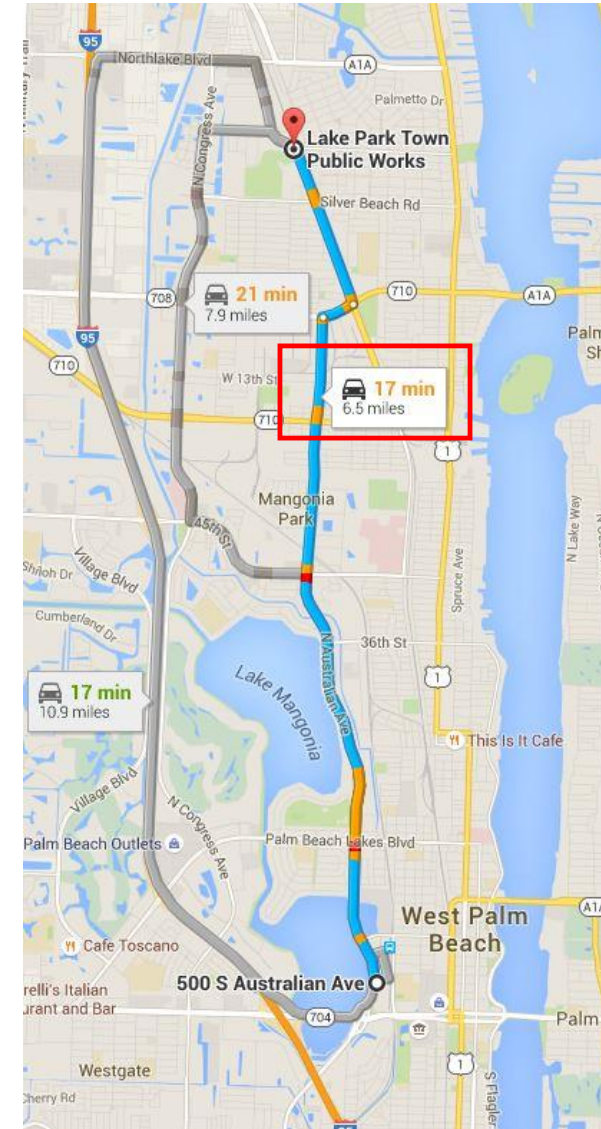
- Current project workload
- Staffing levels for quick turnaround
- Subconsultants



Continuing services contracts with over 40 clients in Florida

Delivery Methods

- Personal delivery
- FTP sites
- Courier
- Express Mail



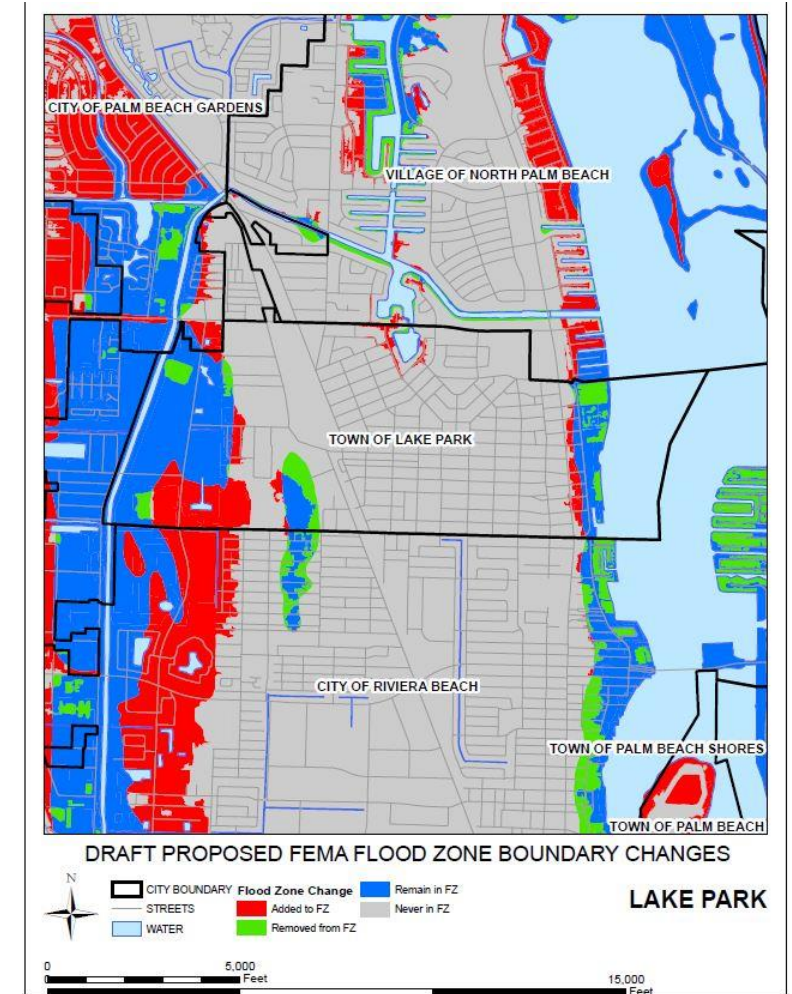
Communication Methods

- Internal communication
 - Weekly office meetings
 - Weekly inter-office coordination meetings
 - Open lines of communication between all employees
- Client communication
 - One point of contact for the Town
 - Progress reports
 - Progress meetings
- Expectations of the Town
 - Establish schedule for each project
 - Provide budget level for each project
 - Prompt review of consultant work when time is of the essence
 - Feedback on performance



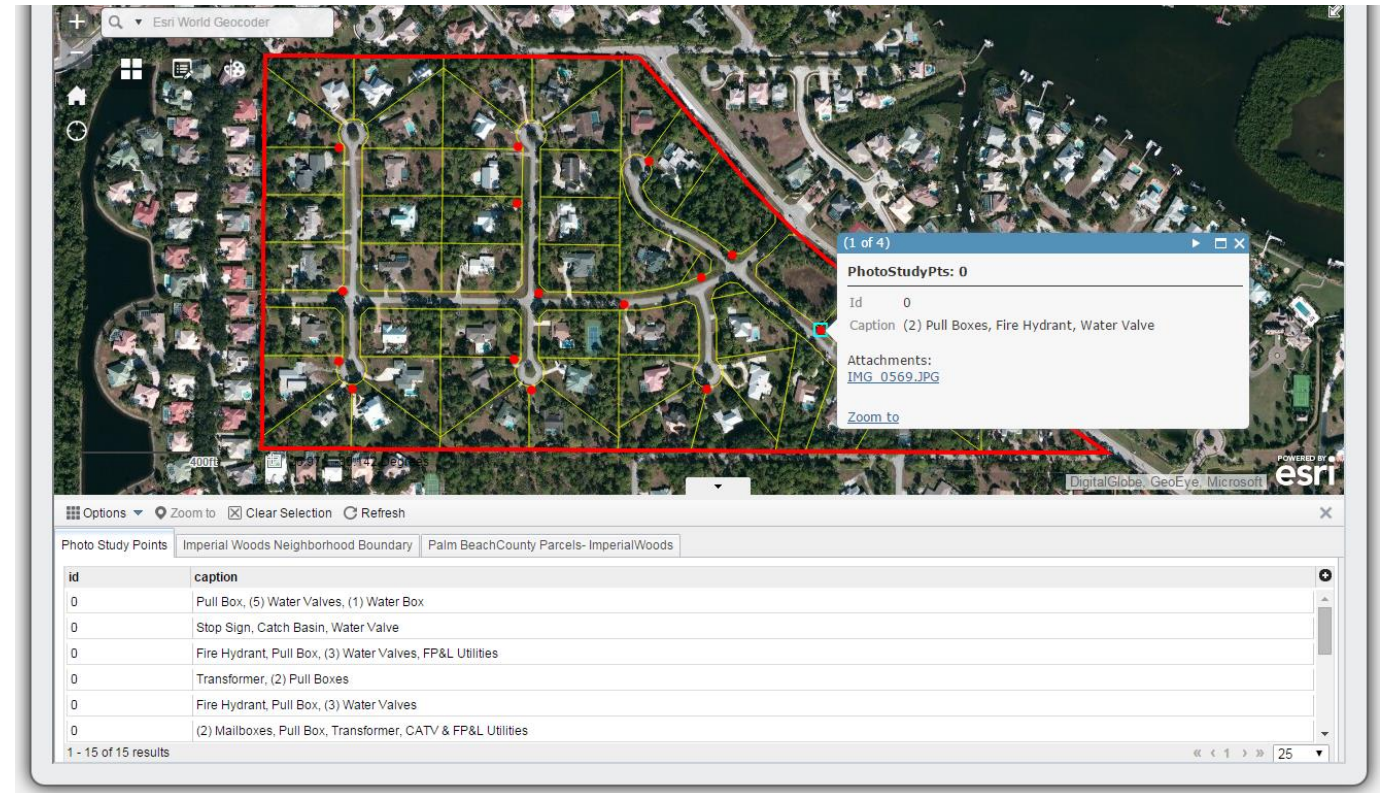
FEMA Flood Maps

- Leader in County effort for map modifications, reduction in over \$20 million dollars in insurance premiums
- 4 certified flood plain managers
- Flood determination letters
- Familiarity with LOMA/LOMR
- Active member on County and League of Cities FEMA Committees
- Familiar with LIDAR mapping initiative
- RISK Mapping



GIS

- GIS for engineering
- Exhibits
- Atlas creation, modifications
- GIS Online
- Advanced GIS systems analysis



GIS Programs

- Underground utilities
- Street signs
- Street lights
- Tree inventories
- NPDES maintenance records

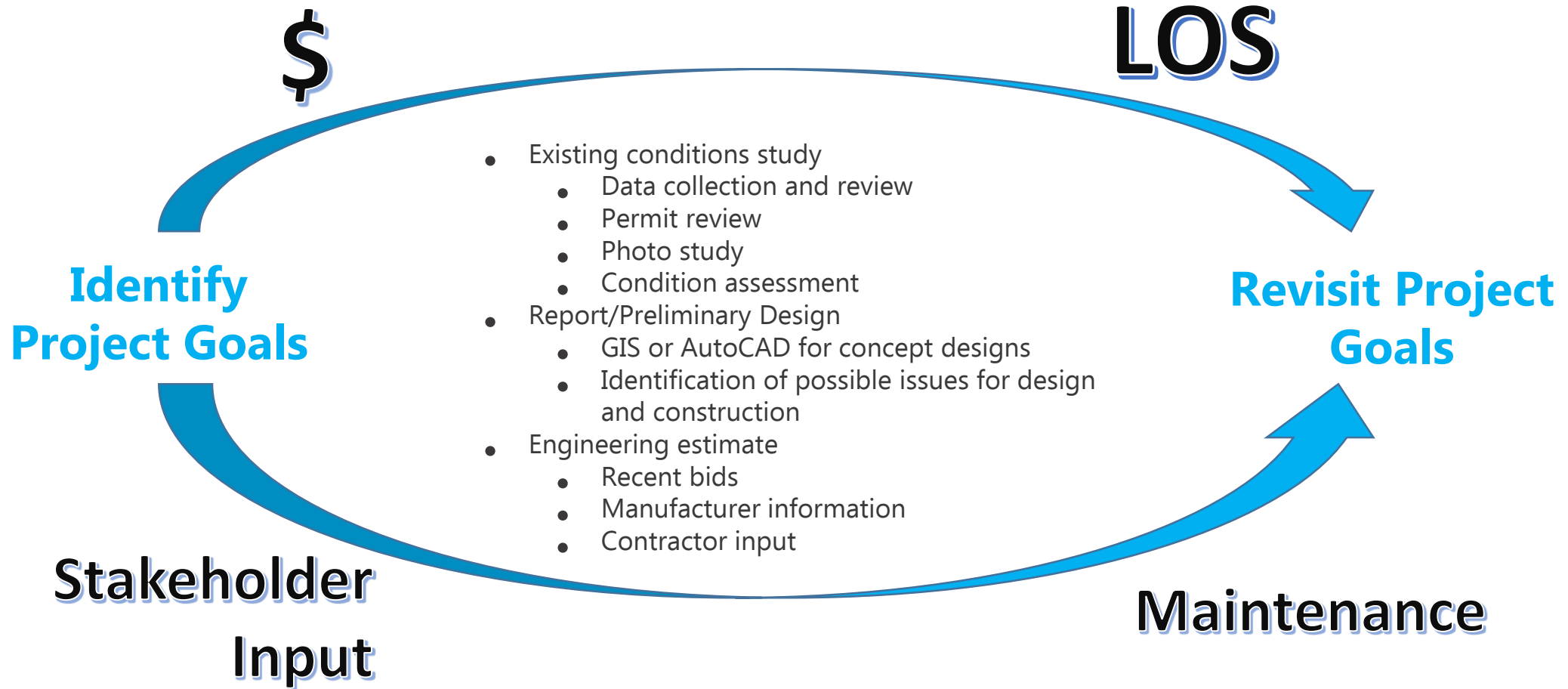


Quality Assurance / Quality Control

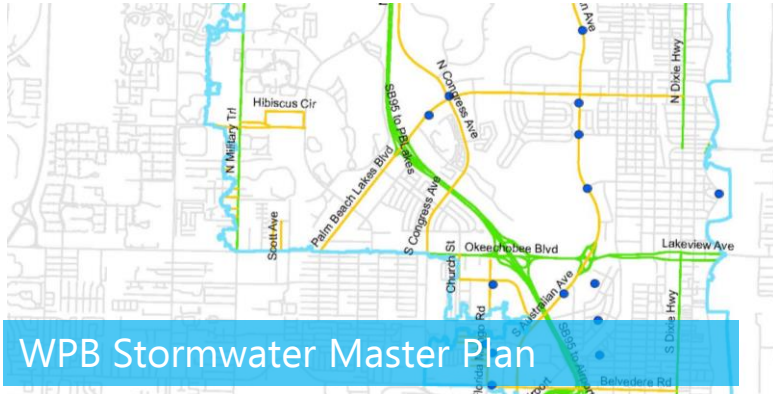
- Internal procedures
 - Kick-off meeting report
 - QC/QA Checklists per discipline
 - Action Item list
 - Permit Tracker
- Subconsultants
 - Expectations for high level of service
 - Constant communication
 - CMA review prior to submittal



Storm, R/W and Landscape Improvements



Master Plan Experience



WPB Stormwater Master Plan



LBTS Stormwater Master Plan



PB Stormwater Master Plan



FLL Stormwater Master Plan Update



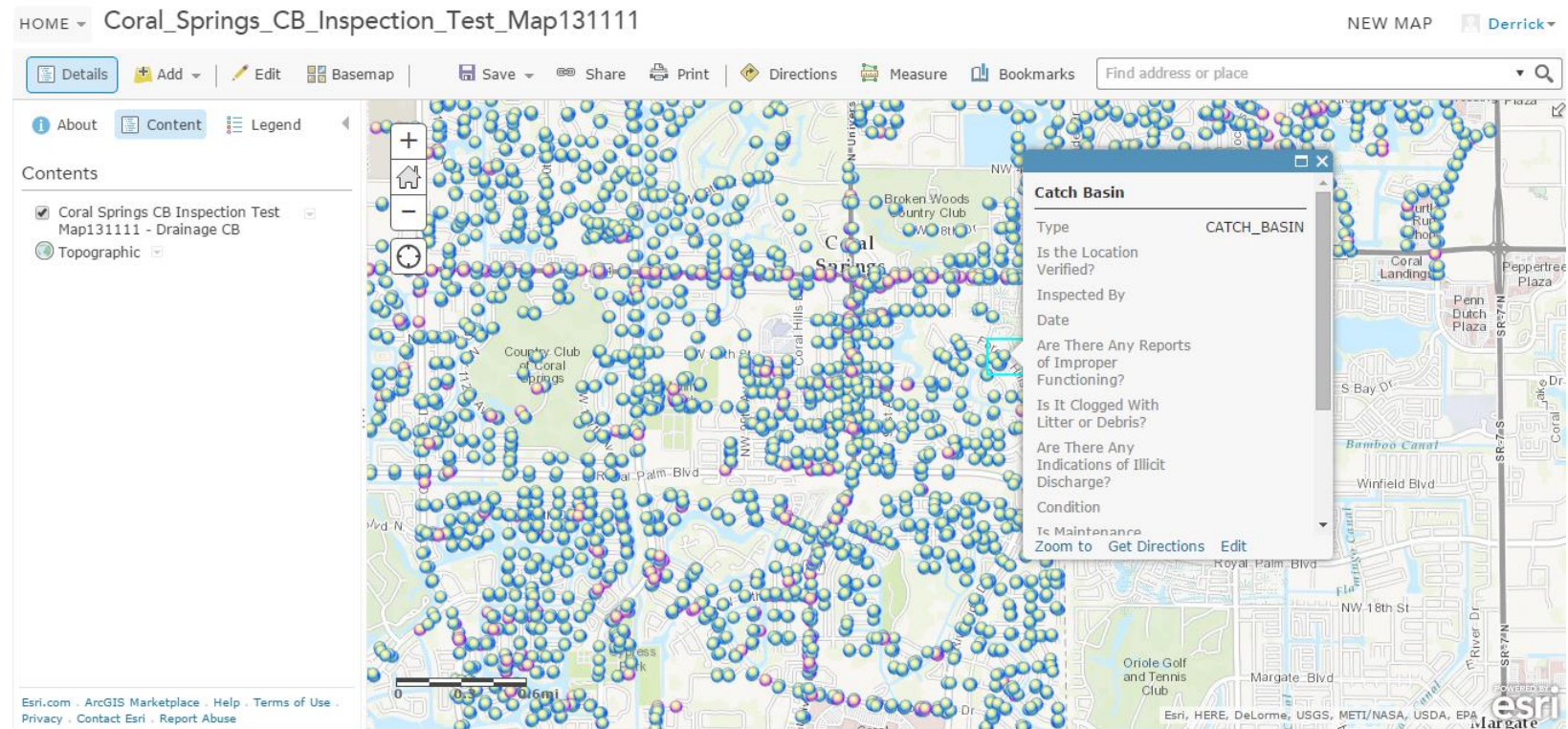
Jupiter Pavement Assessment



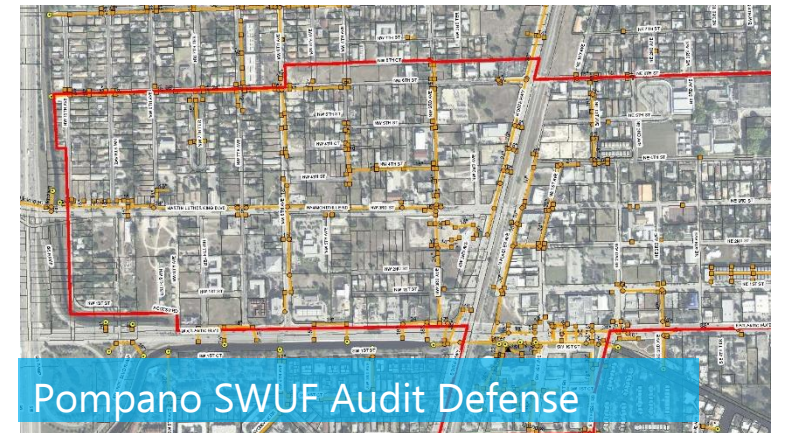
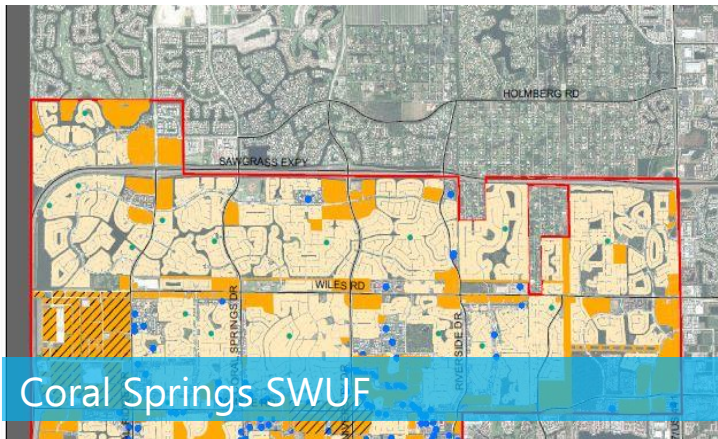
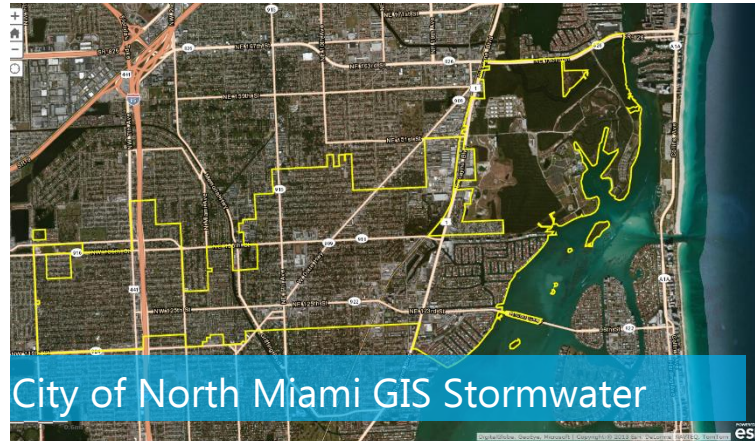
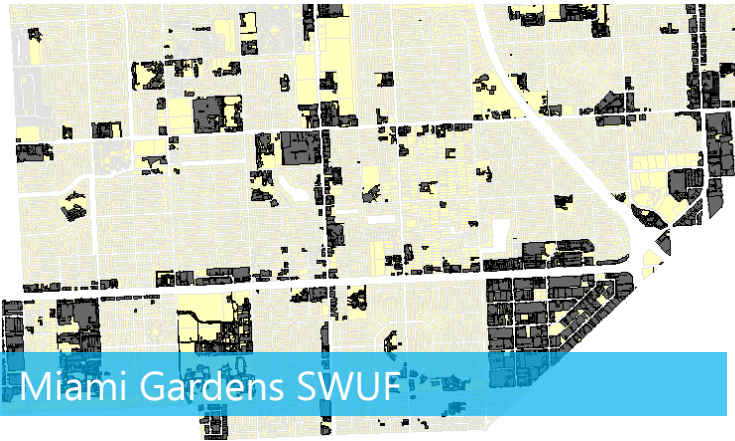
Marathon Roadway Master Plan

NPDES Annual Reports

- GIS integration
- Preparation of annual report
- Guidance for Town maintenance each year
- Prepared phase II permit for Marathon
- Filed annual reports for Coral Springs, Pompano Beach, Lauderdale-By-The-Sea, Wilton Manors
- Familiar with NPBCID lead permittee role
- Reviewed previous Town ARF filings
- Supported clients in 5 audits



SWUF Experience



Seacoast Utility Authority Experience

- Coordination for Silver Beach Road
- Palm Beach Gardens Tennis Center Utility Service
- Mandel Jewish Community Center
- Frenchmans Reserve



**MINIMUM CONSTRUCTION STANDARDS
AND SPECIFICATIONS**

FOR

**WATER DISTRIBUTION SYSTEMS
SEWER COLLECTION SYSTEMS
RECLAIMED WATER SYSTEMS**

Value Added *Services*

Value Added **Services**



FDOT CEI Certified

- Experienced Construction Personnel
- Ability to Serve as LAP Consultant for Town

Community Redevelopment Experience

- Finding of Blight Experience
- Understanding of Tax Increment Funding
- Members of Florida Redevelopment Association

Marina Experience

- Understanding of ACOE/USCG Requirements
- Familiarity with SOBA Design Guidelines
- Experience with Grant Funding (FIND, etc)



Summary

Why Select the Chen Moore Team?



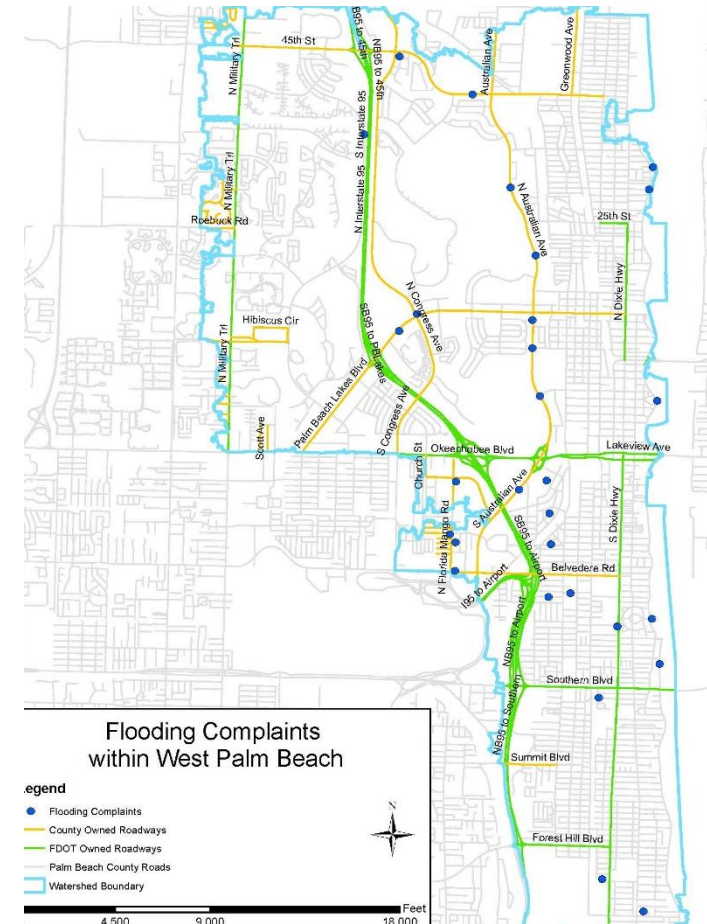
- Goldilocks Sized Firm
- Strong Plan Review, NPDES and FEMA background
- Proven success with continuing services contracts
- Multi-Disciplinary Firm with Existing Sub Relationships
- Local Community Involvement

Miscellaneous Slides

For Questions and Answers only.
Will not be included in verbal presentation unless needed.

WPB Stormwater Master Plan

- Subconsultant to Collective Water Resources
- Stormwater quantity and quality modeling, field investigation, conceptual design, permitting and cost estimating
- Performing unique tasks such as a sea level rise analysis with Florida Atlantic University, CIP planning, evaluation of standards and operating procedures, preparation of items for Community Rating System (CRS) audit and public outreach



LBTS Stormwater Master Plan

- Project area includes approximately 640 acres of land which are separated into 1,618 properties
- Encompasses approximately 1.5 square miles of land area
- Identified any deficiencies in the existing stormwater management system
- Recommended system improvements to meet regulatory level of service criteria
- Provided an estimated cost to construct these upgrades to the stormwater management system
- Gathered all existing information available from previous drainage plans, utility atlases, regulatory permits, reports, and studies
- Confirmed accuracy for use in the existing conditions model
- Updated the digital stormwater atlas in GIS
- Utilized LIDAR data to create a TIN surface model of the Town limits
- Collected resident complaints in regards to flooding
- Prepared the existing conditions model with Interconnected Pond Routing (ICPR) Software
- Identified areas with flooding issues

Exhibit 6
Existing Drainage Atlas

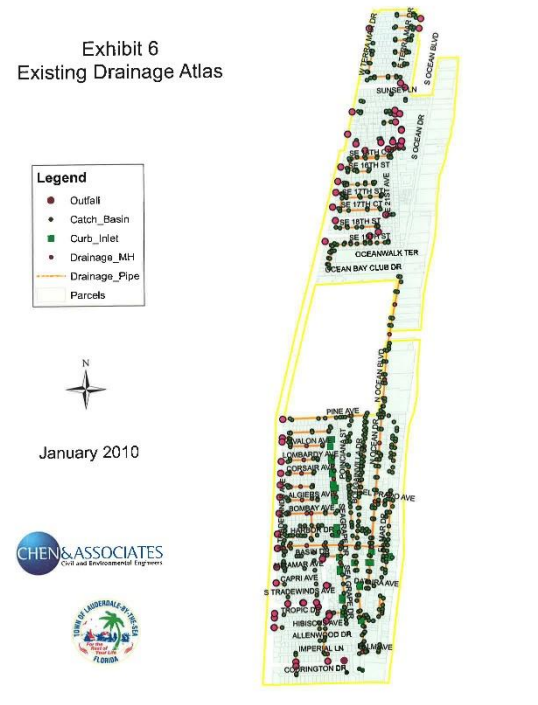
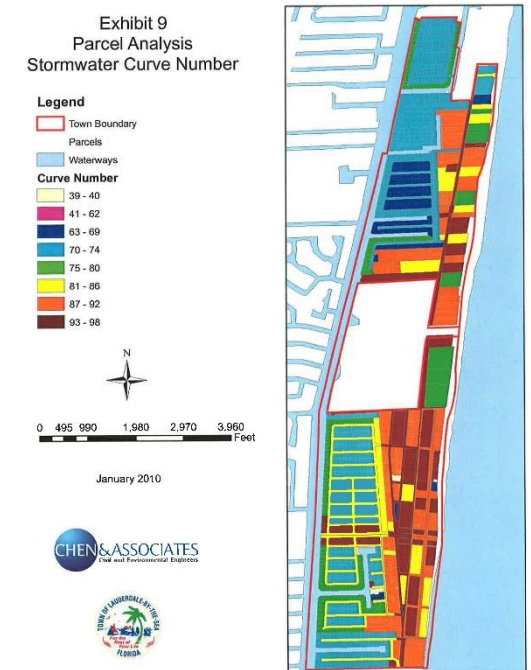
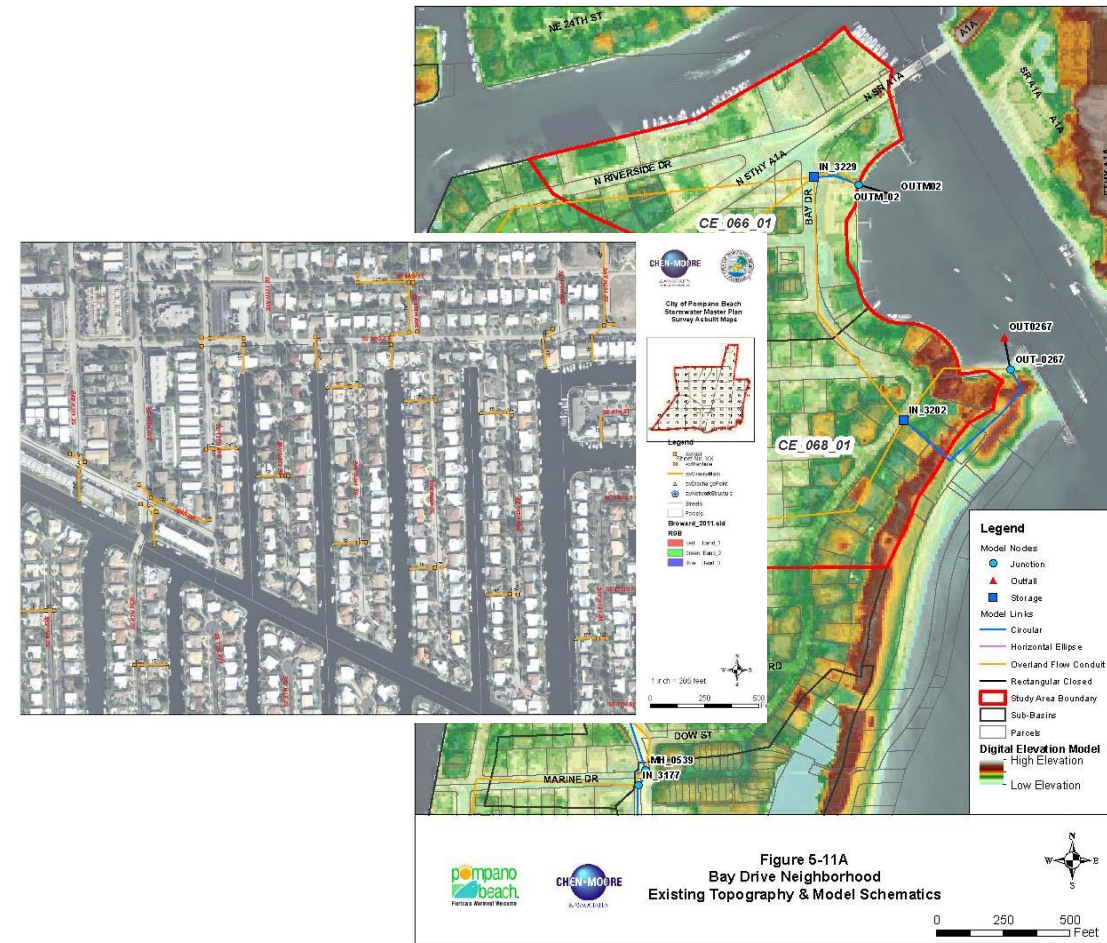


Exhibit 9
Parcel Analysis
Stormwater Curve Number



Pompano Beach Stormwater Master Plan

- 24.6 square miles
- Identified any deficiencies in the existing stormwater management system in regards to flood control and water quality treatment
- Assisted the City with the documentation of how the Floodplain Management Plan was prepared per the requirements of FEMA
- Developed annual budget for the stormwater management system



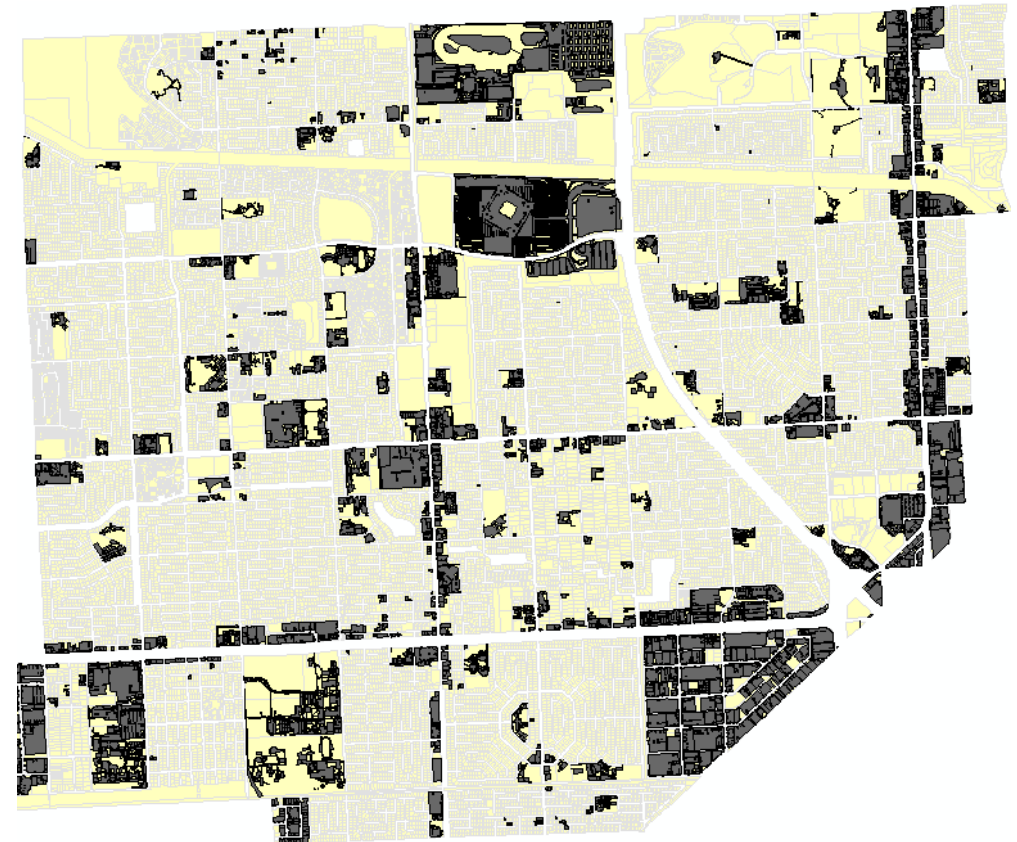
FLL Stormwater Master Plan Update

- Review and verify earlier work by other consultants during 2001-2005
- Convert previous SWMM stormwater model to ICPR model
- Obtain updated topographic data for TIN development
- Calculate updated hydrologic parameter for drainage basins
- Conduct analysis of various system improvement alternatives
- Prepare Stormwater Master Plan Update



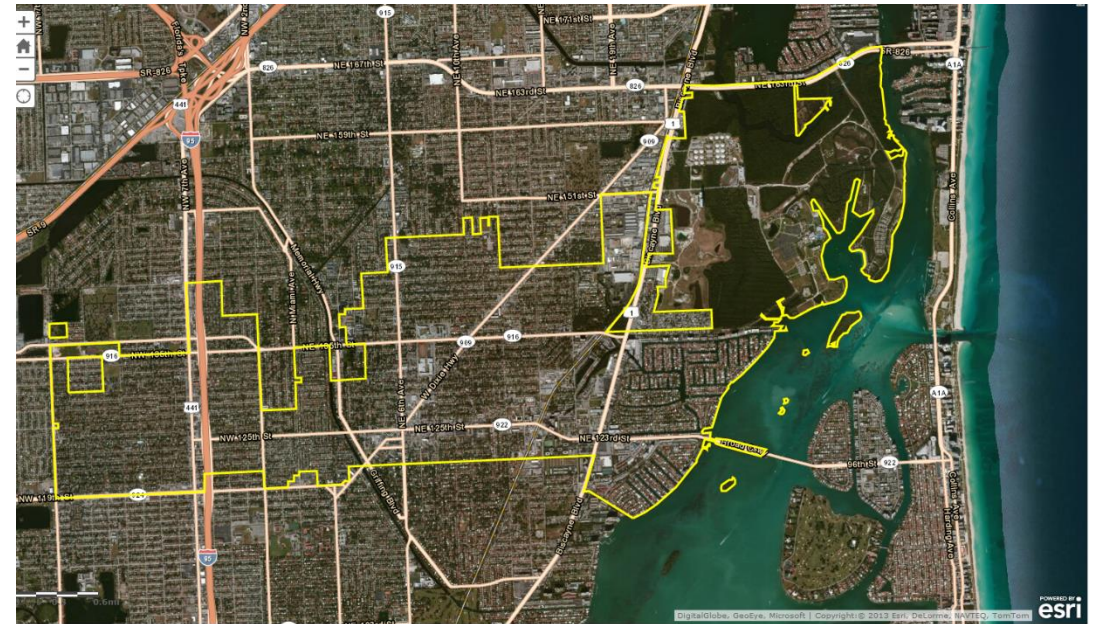
Miami Gardens SWUF

- Updated the City Stormwater Utility Fee
- Created a tax roll for collection through the County Property Appraiser
- Collected latest parcel data and high resolution aerial from the County
- All non-residential properties digitized for impervious areas
- All properties categorized according to land use and the appropriate formulas were applied per land use to calculate stormwater fees
- Database of values compared to previous utility billings to verify billings
- Updates made to the database to reflect recent developments and City records of Certificate of Occupancy records
- Calculations database converted into a tax roll and submitted to the Property Appraiser, both TRIM notice and Final
- Detailed calculations spreadsheet submitted to City for reference during appeals process.
- Impervious data posted in ArcGIS Online for the City to verify appeals



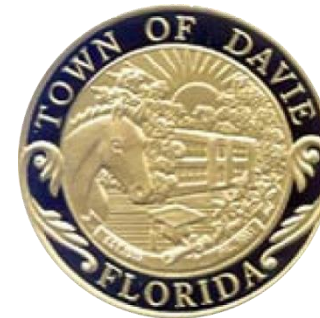
City of North Miami GIS Stormwater

- Implemented City of North Miami's Public Works Stormwater Operation into GIS
- Project included complete review of City's Stormwater GIS data, updates to GIS information to satisfy County requirements, training for the City on specific topics to improve GIS work efficiency and implementation of an asset management system through the use of ArcGIS 10.2 and ArcGIS Online
- Developed a small asset management system for City's Stormwater Network to help field crew locate and update information regarding Stormwater Structures
- Sewer system based on old paper atlas sheets
- Scanned and georeferenced to create GIS layers
- GPS data collected from contractors performing maintenance of manholes
- GIS gave the City the ability to verify the locations of maintenance, removing duplicate billing and identifying manholes that were missed by the contractor maintenance operations
- Provided GIS training to City staff



Davie Stormwater Rate Study

- GIS services to the Town of Davie to determine Stormwater Utility Fee
- Impervious area of all non-residential and a sample data set of residential parcels digitized and calculated in GIS
- Analysis made of costs to be generated and a fee was assigned to each parcel



Marathon SWUF

- Large GIS component
- Impervious area of a sample set of residential parcels digitized using aerial interpretation in GIS
- Equivalent Residential Unit (ERU) analysis was completed by calculating average impervious area per residential parcel
- Impervious area for each non-residential lot digitized and the number of ERUs was assigned
- Total fee established by analyzing the anticipated yearly public works program by the City
- Weighted Stormwater Utility Fee determined for each parcel based on ERUs
- List of parcels with fees submitted to tax authority
- Prepared Stormwater Utility Ordinance for the City, including the fees for different types of land
- Assisted City by explaining processes and outcome to City Commission at meetings
- Continues to do yearly re-assessments of tax roll to account for changes in property ownership, new developments and appeals by residents

