

GENERAL NOTE: ALL WORK SHALL BE IN COMPLIANCE WITH RECOGNIZED INDUSTRY STANDARDS, MANUFACTURER'S RECOMMENDATIONS, AND ALL APPLICABLE STATE AND LOCAL CODES. NO SUBSTITUTIONS ALLOWED.

"Signage Packet"

COMMUNITY

JAN - 7 2015

REVISIONS

* page 21 revised.



RT1120 Congress & Park - Lake Park, FL
Sept. 24, 2014
December 18, 2014

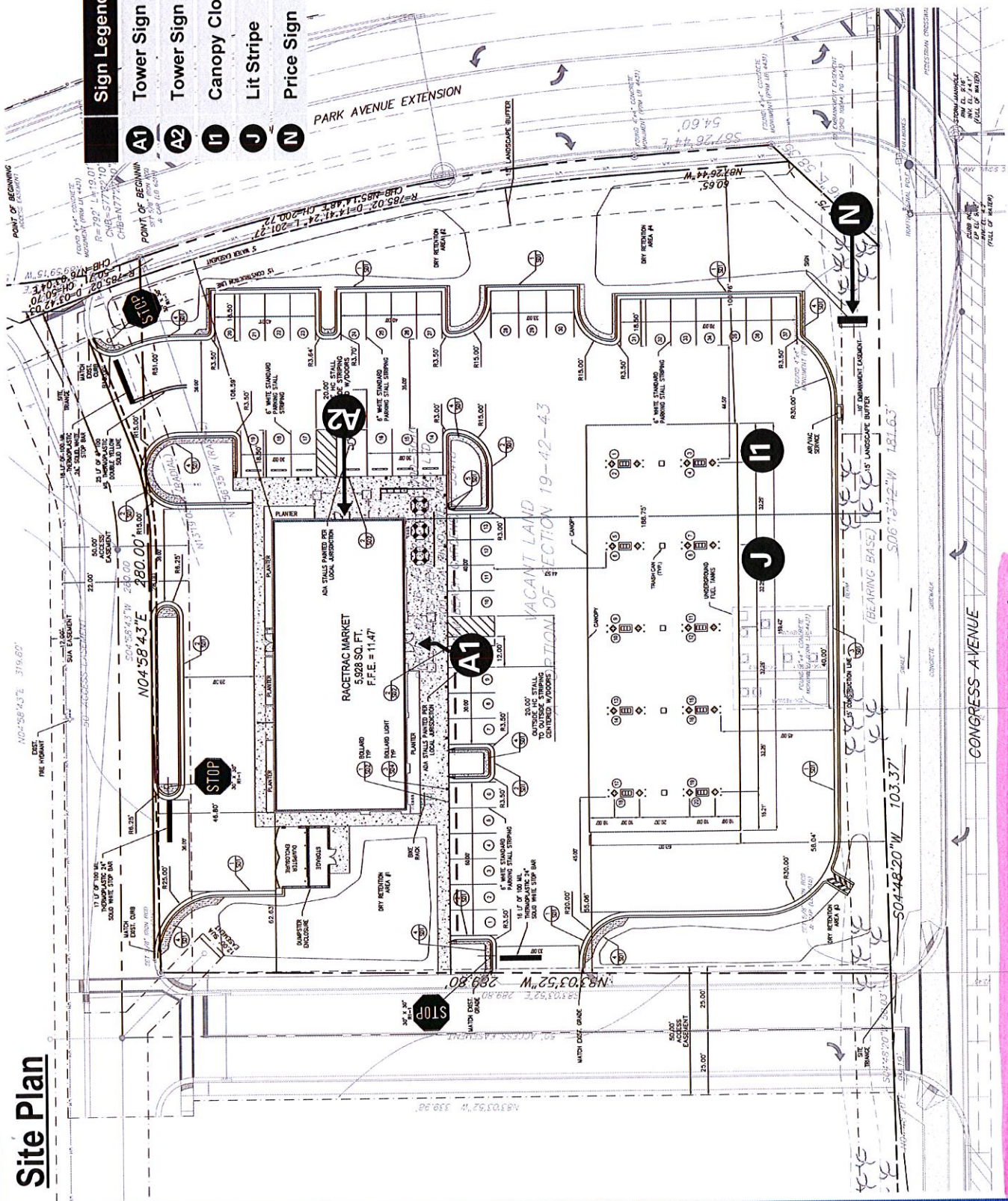
Representation of signage only. See architectural submittal for building elevations



Site Plan

Sign Legend

- A1** Tower Sign
- A2** Tower Sign
- I1** Canopy Cloud Sign
- J** Lit Stripe
- N** Price Sign



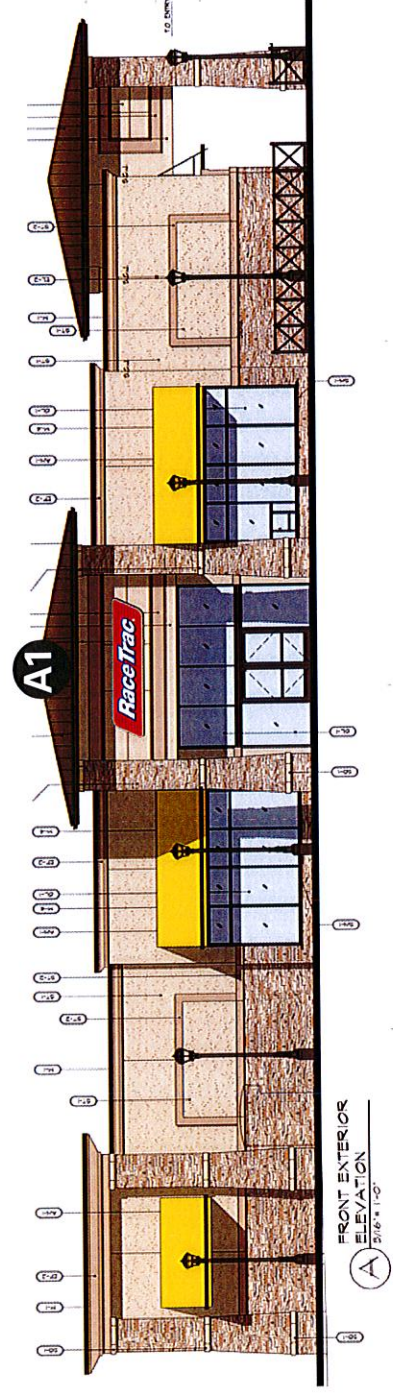
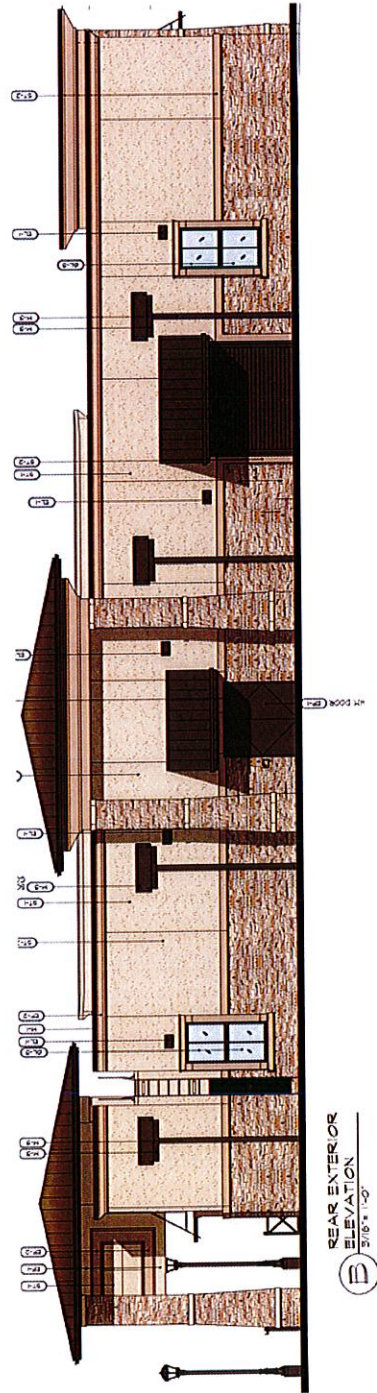
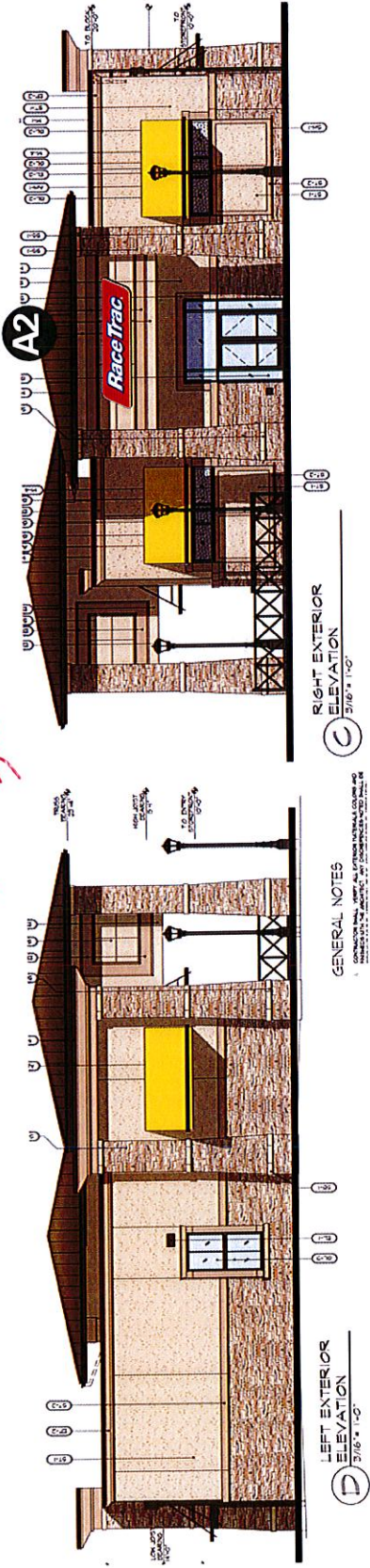
Representation of signage only. See architectural submittal for building elevations



f

Building Elevations

*actual trans
see elevs A000
5 sheets A200*



Representation of signage only. See architectural submittal for building elevations



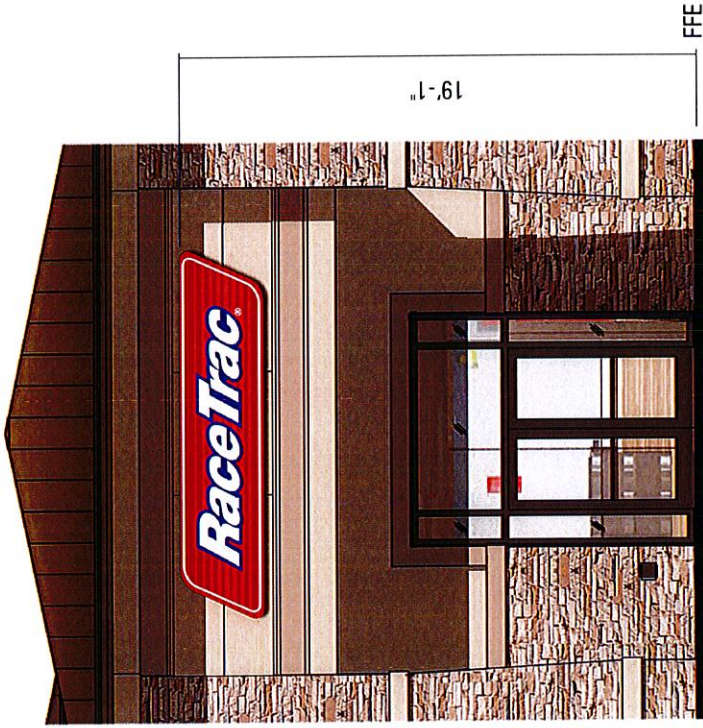
EIFS Tower Sign

A1



FRONT ENTRANCE

A2



SIDE ENTRANCE

Sign Label	Sign Type	Height	Length	Total Area
A1	Tower Sign	3'-0"	13'-5/8"	41 sf
A2	Tower Sign	3'-0"	13'-5/8"	41 sf

EIFS Tower Sign

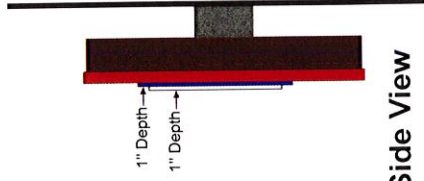
A1: Front Entrance

A2: Side Entrance

13'- 5/8" Overall Sign Length



Front View



Side View

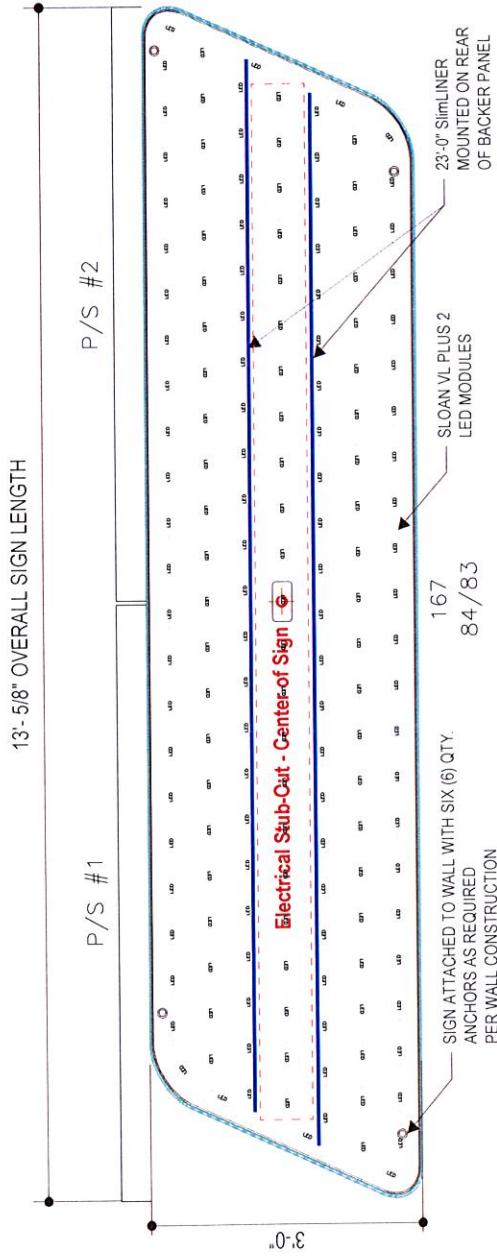
RaceTrac Parallelogram Cabinet:

Formed clear polycarbonate face with Sloan VL Plus 2 Series White LED illumination and digitally printed red background stripes and white border applied to 2nd surface. Blue area for logo graphic to be embossed 1" and white portion of logo to be embossed 1". RaceTrac letters and outline painted 2nd surface.

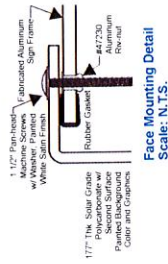
COLOR REFERENCE

-  PMS 485 C
 -  White
 -  PMS 1805 C
 -  Akzo Nobel Duranodic Bronze
 -  PMS 280 C
 -  SIGN31054 with Clear Gloss Top Coat
- All Colors to be Verified

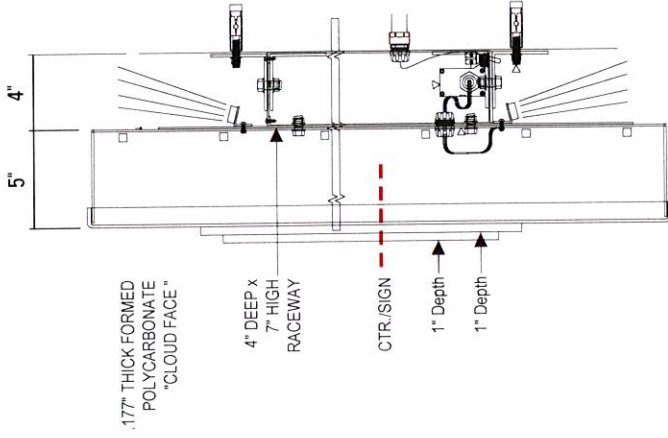
EIFS Tower Sign - Construction and Electrical Details



Front View Construction & LED Illumination Detail



SIDE VIEW CONSTRUCTION DETAIL FACE LIT/BACK LIT LED ILLUMINATED CHANNEL LETTER



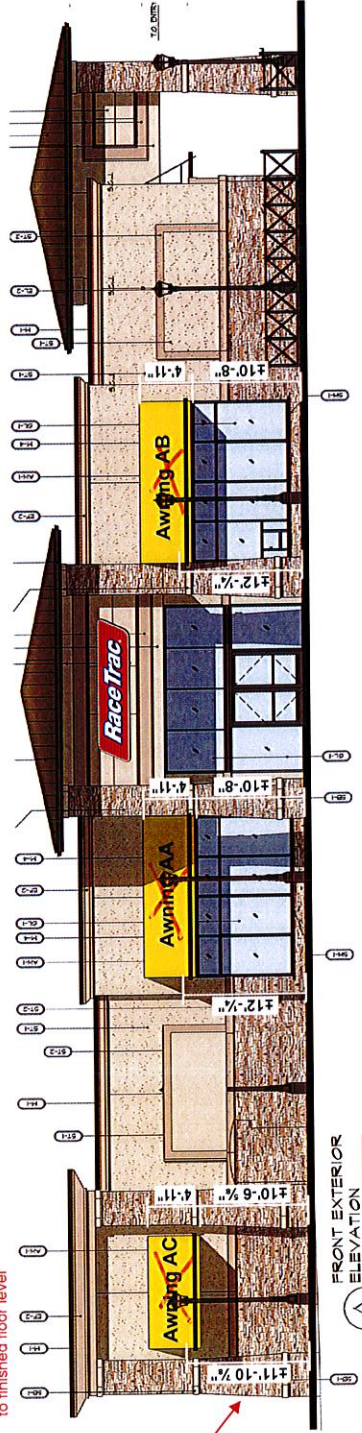
THIS SIGN IS INTENDED TO BE INSTALLED IN ACCORDANCE WITH THE REQUIREMENTS OF ARTICLE 600 OF THE NATIONAL ELECTRICAL CODE AND/OR OTHER APPLICABLE LOCAL CODES. THIS INCLUDES PROPER GROUNDING AND BONDING OF THE SIGN.

- 1) This design and drawing are proprietary and the property of SloanLED. Any reproduction or use without prior written approval is prohibited.
- 2) ChannelLED modules and power supply quantities are ESTIMATES ONLY and are based on the supplied information and drawings. Channel letter depth, lens color, material and thickness can vary, which may lead to an increase or decrease in product at the time of installation. To ensure accurate product requirements, it is recommended that product is tested using customer's specific lens material and letter configuration.
- 3) SloanLED highly recommends applying Light Enhancement Paint (LEP) or Light Enhancement Film (LEF) inside channel letters for optimal illumination.
- 4) Jacketed cable estimated assumes maximum run length of 15' per leg of the power supply.

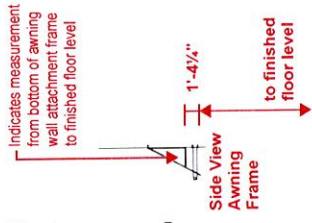
- 1) ACTUAL CHANNEL LETTER POPULATION AND PRODUCT PLACEMENT MAY VARY FROM THIS LAYOUT
 - 2) VL PLUS 2 WHITE 6500K LONG LAD OUT AT 2.0 MODULES PER FOOT, 5.0\"/>
- ESTIMATED PRODUCT B.O.M. PER SIGN:
 167 Each VL Plus 2 White 6500K Long Modules - 84'
 PN: 701269-6WLA2-MB
 2 Each Modular 60 Power Supplies 12VDC
 1 Each 100' Roll of Jacketed Cable

Building Awnnings

Indicates measurement from bottom of awning wall attachment frame to finished floor level

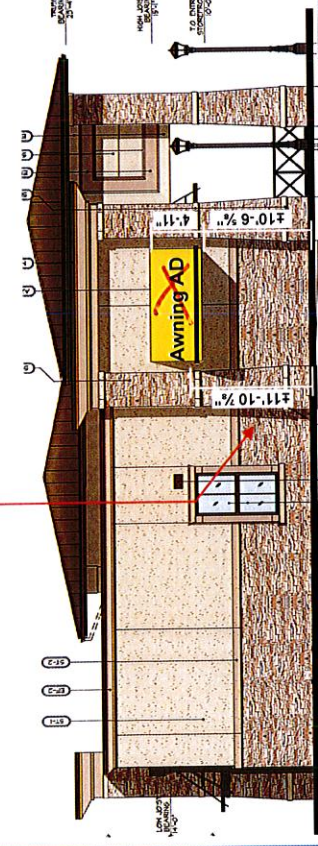


FRONT EXTERIOR ELEVATION
3/16" = 1'-0"



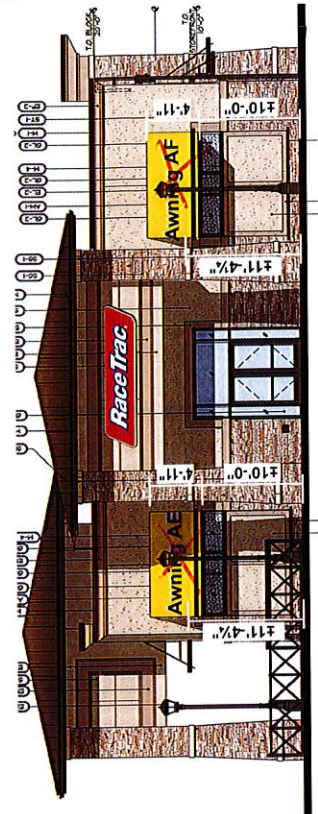
Note: Actual awning installation height to be verified with site specific store locations.

Indicates measurement from bottom of awning wall attachment frame to finished floor level



LEFT EXTERIOR ELEVATION
3/16" = 1'-0"

GENERAL NOTES
1. CONTRACTOR SHALL VERIFY ALL DIMENSIONS, MATERIALS, COLORS AND FINISHES WITH THE ARCHITECT. ANY DISCREPANCIES SHALL BE



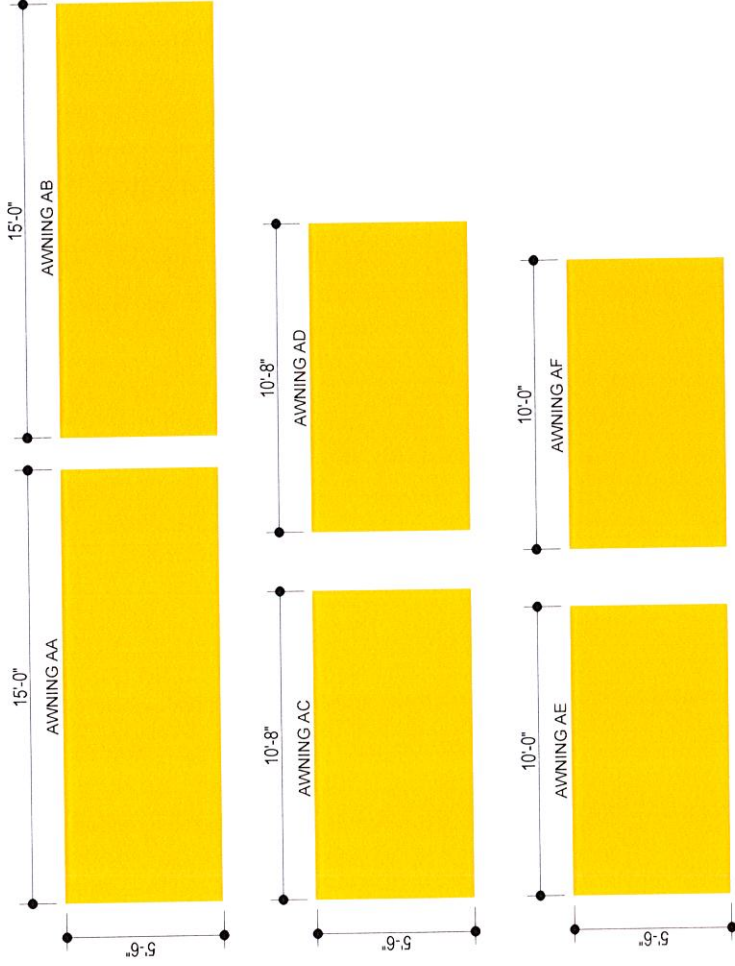
RIGHT EXTERIOR ELEVATION
3/16" = 1'-0"

NON-BID ITEM

RaceTrac

Representation of signage only. See architectural submittal for building elevations

Building Awnings - Yellow Standard Color Scheme



Awning Sizes - Front View - Graphic Layout

Awning Colors:

Yellow



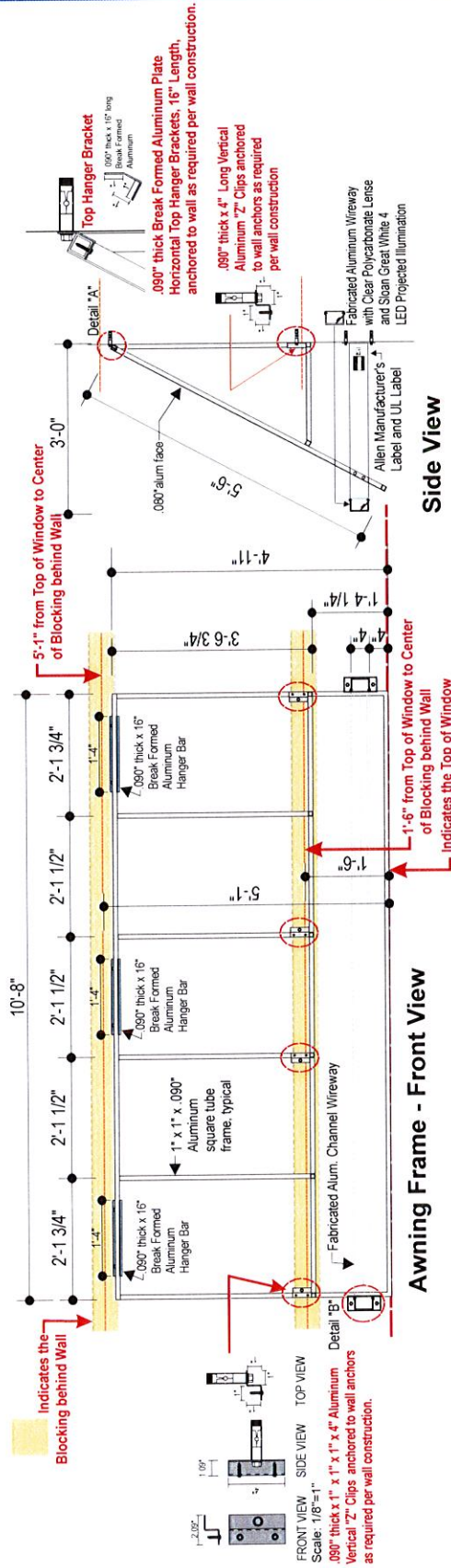
Awning Background Color Painted to match Akzo Noble
SIGN40388 GGP Sainr, RaceTrac Awning Yellow
C.O. M 10. Y 100. K 0

Representation of signage only. See architectural submittal for building elevations

RaceTrac

NON-BID ITEM

Building Awnings - Manufacturing Details - 10'-8" Awnings (AC & AD)



Note:
* Electrical Stub Out: Always at the Left End of Awning at the Support Arm Wall Attachment location
Electrical Junction Box installed behind wall by Licensed Electrician for Electrical connection.



Top View - Electrical Stub Out

Detail B
Side View Detail - Aluminum Wireway with Clear Poly Lens and LED Illumination

Channel Wireway Detail
Side View
Fabricated Alum. Channel End Supports with 1/4" thick Aluminum Mounting Plate

Detail C

NON-BID ITEM

UL LISTED
ELECTRIC SIGN
THIS SIGN IS INTENDED TO BE INSTALLED IN ACCORDANCE WITH THE REQUIREMENTS OF ARTICLE 600 OF THE NATIONAL ELECTRICAL CODE AND/OR OTHER APPLICABLE LOCAL CODES. THIS INCLUDES PROPER GROUNDING AND BONDING OF THE SIGN.

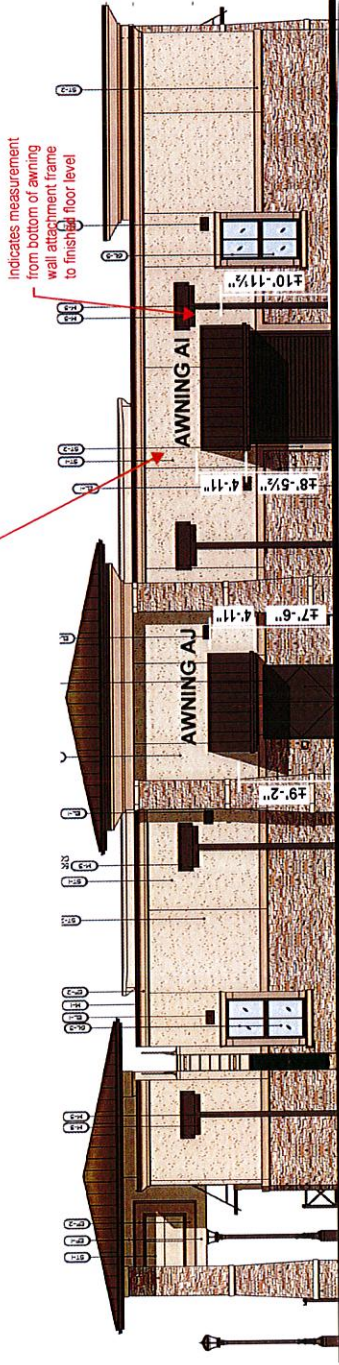


Representation of signage only. See architectural submittal for building elevations

RaceTrac

Building Awnings - Standing Seam

Note:
 Standing seam metal awning installed over the electrical panel door at back of building to cover the horizontal barrel assembly located above the door. Installation height above finished floor level may vary. Exact placement to be located as required to cover horizontal barrel assembly.



REAR EXTERIOR
 ELEVATION
 3/16" = 1'-0"

for EIFS Installations

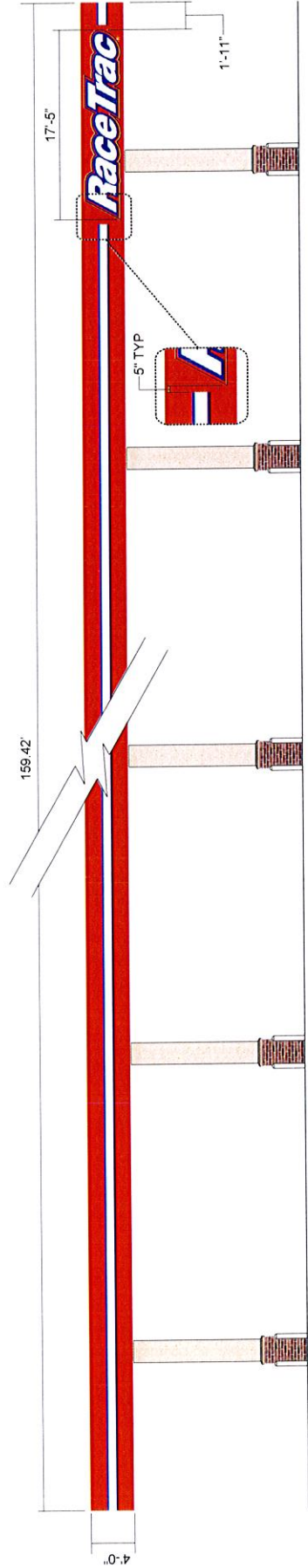
NON-BID ITEM



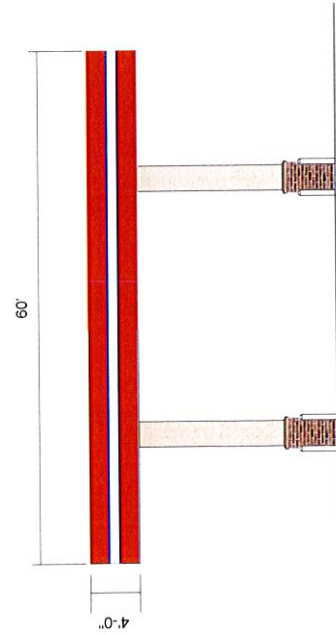
Representation of signage only. See architectural submittal for building elevations

GENERAL NOTE: ALL WORK SHALL BE IN ACCORDANCE WITH REQUESTER'S INDUSTRY STANDARDS, MANUFACTURER'S RECOMMENDATIONS, AND ALL APPLICABLE STATE AND LOCAL CODES. NO SUBSTITUTIONS ALLOWED.

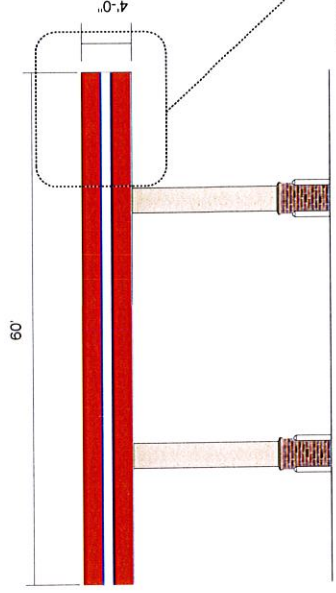
57 SF Canopy LED Cloud Sign - Red Canopy



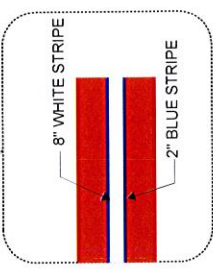
GAS CANOPY FRONT ELEVATION



LEFT SIDE VIEW - RED CANOPY



RIGHT SIDE VIEW - RED CANOPY



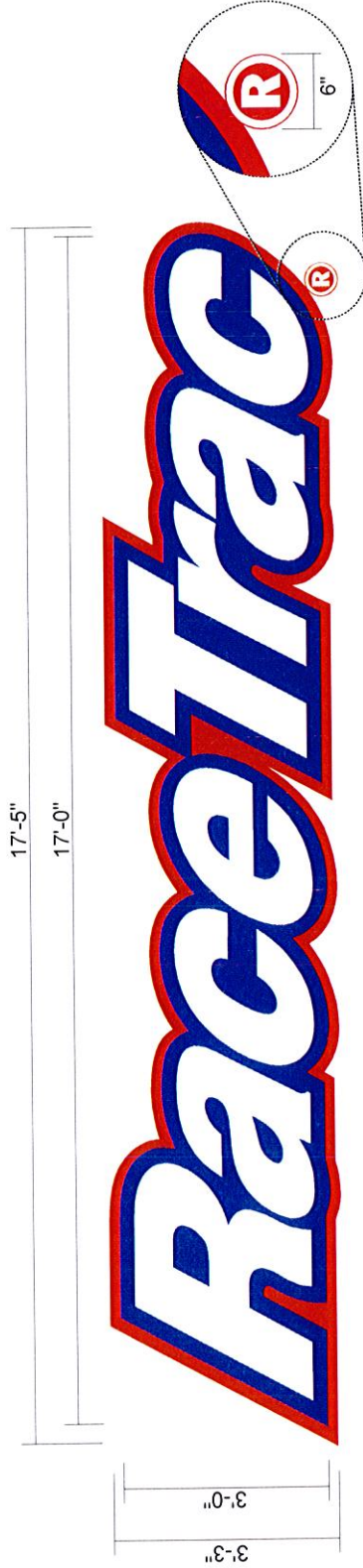
COLOR SCHEDULE

- RaceTrac Red
To Match RGB = 216, 30, 5
- RaceTrac Blue
To Match RGB = 0, 43, 127

Representation of signage only. See architectural submittal for building elevations

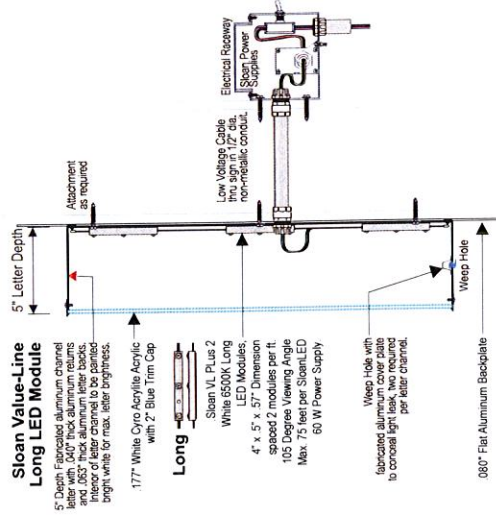


57 SF Canopy LED Sign (I)



SPECIFICATIONS:

- FACES: .177 WHITE CYRO ACRYLITE ACRYLIC.
- FACE VINYL: 3M 180 SAPPHIRE OPAQUE BLUE.
- TRIMCAP: 2" BLUE.
- BACKS: .063 ALUMINUM.
- RETURNS: 5", .040 ALUMINUM PAINTED TO MATCH PMS 485 RED.
- CLOUD BACKGROUND: .080 ALUMINUM PAINTED TO MATCH PMS 485 RED.
- REGISTRATION MARK: .080 ALUMINUM PAINTED TO MATCH PMS 485 RED.
- w/ WHITE VINYL APPLIED. MARK IS INTEGRATED PART OF CLOUD SHAPE.
- ILLUMINATION: SLOAN VALUE LINE PLUS LONG LED MODULES.



COLOR SCHEDULE

- White
- PMS 485 Red
- 3M Sapphire Blue

LISTED **UL** **us** **ELECTRIC SIGN**

THIS SIGN IS INTENDED TO BE INSTALLED IN ACCORDANCE WITH THE REQUIREMENTS OF ARTICLE 600 OF THE NATIONAL ELECTRICAL CODE AND/OR OTHER APPLICABLE LOCAL CODES. THIS INCLUDES PROPER GROUNDING AND BONDING OF THE SIGN.

GROUNDING ELECTRICAL CONNECTIONS

Representation of signage only. See architectural submittal for building elevations

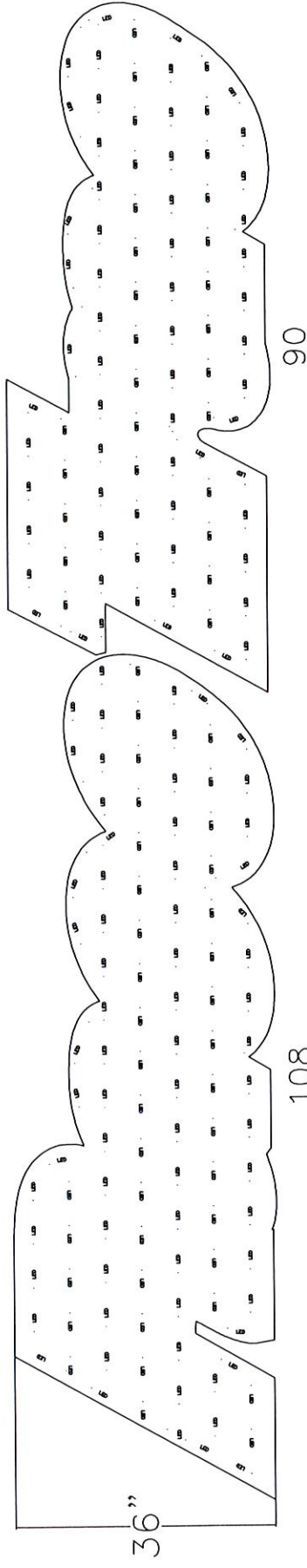


57 SF Canopy LED Cloud Sign (I)

- 1) ACTUAL CHANNEL LETTER POPULATION AND PRODUCT PLACEMENT MAY VARY FROM THIS LAYOUT
- 2) VL PLUS 2 WHITE 6500K LONG LAD OUT AT 2.0 MODULES PER FOOT, 5.0" ON CENTER
- 3) EACH MODULAR 60 POWER SUPPLY CAN RUN UP TO 100 VL PLUS 2 WHITE 6500K LONG MODULES
- 4) LAYOUT BASED ON A 5" CAN DEPTH
- 5) DIMENSIONS ARE IN INCHES UNLESS STATED OTHERWISE



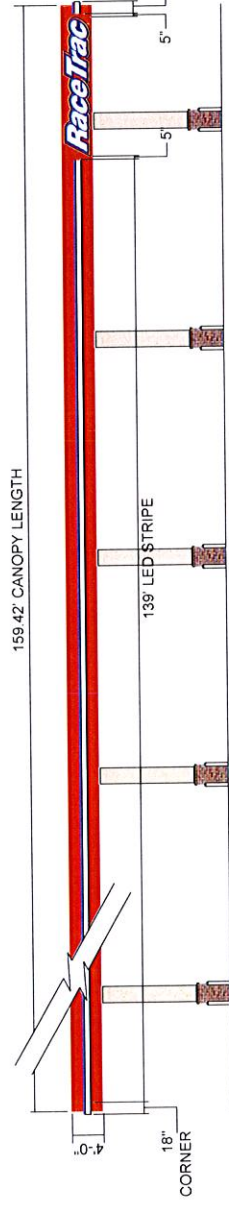
www.SloanLED.com Phone 805.676.3200
Toll-Free 888 747 4LED Fax 805 676 3206



ESTIMATED PRODUCT B.O.M. PER SIGN:
198 Each VL Plus 2 White 6500K Long Modules - 99'
PN: 701269-6WLAZ-MB
2 Each Modular 60 Power Supplies 12VDC
1 Each 100' Roll of Jacketed Cable

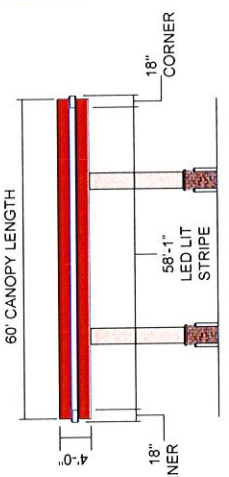
- 1) This design and drawing are proprietary and the property of SloanLED. Any reproduction or use without prior written approval is prohibited.
- 2) ChannelLED modules and power supply quantities are ESTIMATES ONLY and are based on the supplied information and drawings. Channel letter depth, lens color, material and thickness can vary, which may lead to an increase or decrease in product at the time of installation. To ensure accurate product requirements, it is recommended that product is tested using customer's specific lens material and letter configuration.
- 3) SloanLED highly recommends applying Light Enhancement Paint (LEP) or Light Enhancement Film (LEF) inside channel letters for optimal illumination.
- 4) Jacketed cable estimated assumes maximum run length of 15' per leg of the power supply.

Canopy Stripe - LED Lit Stripe (J)

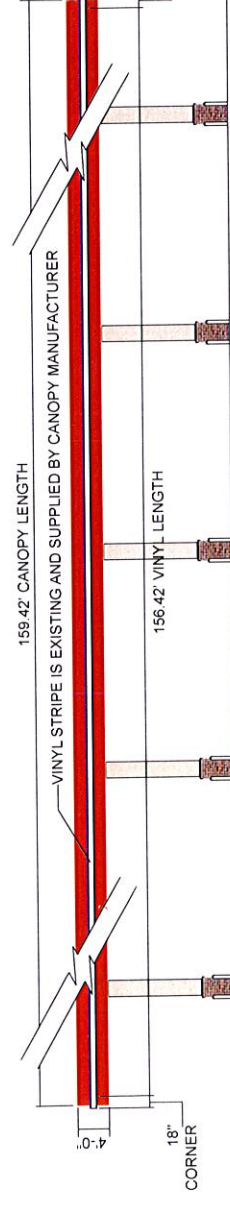


GAS CANOPY FRONT ELEVATION

*REFER TO CANOPY PLANS OR ON-SITE CONDITIONS FOR ARCHITECTURAL FINISHES

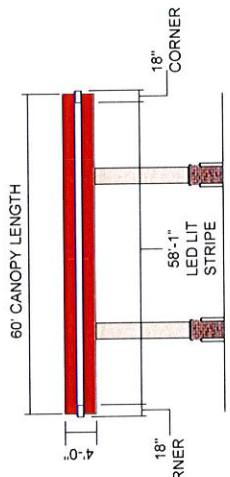


RIGHT SIDE VIEW - RED CANOPY



GAS CANOPY REAR ELEVATION

*REFER TO CANOPY PLANS OR ON-SITE CONDITIONS FOR ARCHITECTURAL FINISHES



LEFT SIDE VIEW - RED CANOPY

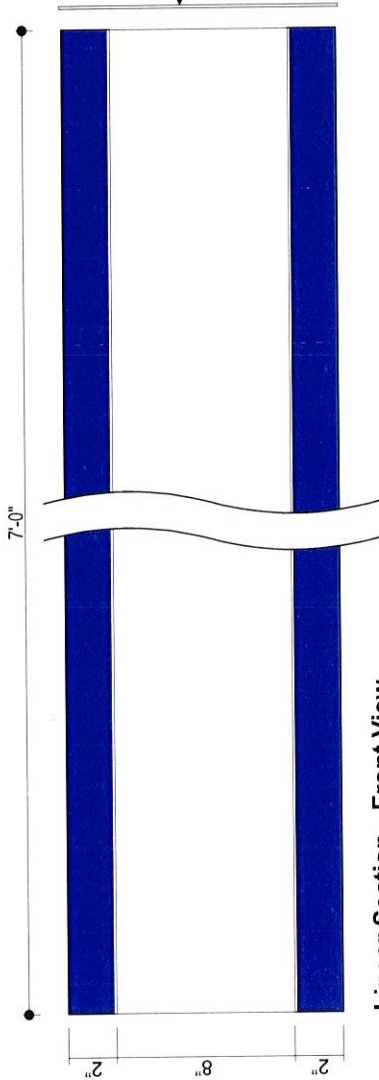
APPLICATION EXAMPLE



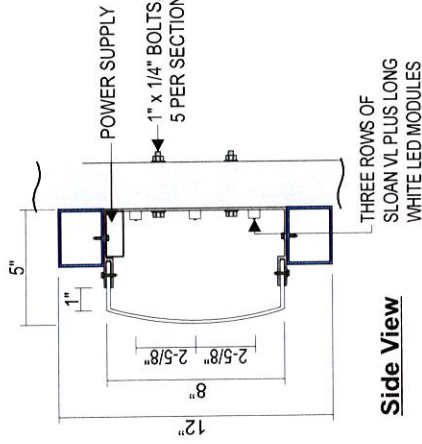
UPON INSTALLATION OF LIT STRIPE, IF ANY VINYL DECAL IS EXPOSED, TRIM AT 90° EVEN WITH EDGE OF LIT STRIPE.



8" White & Blue Lit Canopy Stripe - Red Canopy (J)



Linear Section - Front View

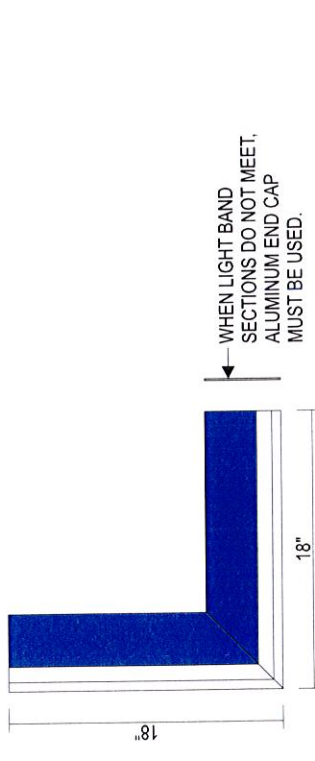


Side View

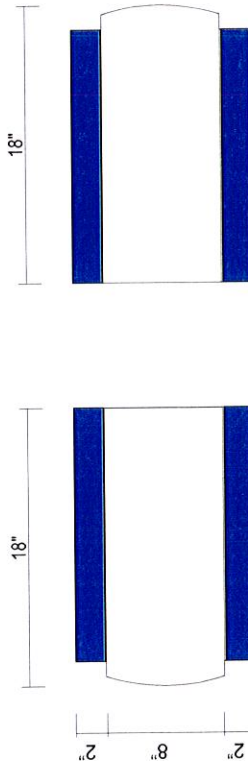
WHEN LIGHT BAND SECTIONS DO NOT MEET, ALUMINUM END CAP MUST BE USED.



701269-WV-MB
VL PLUS LONG
2 MODELS PER FOOT

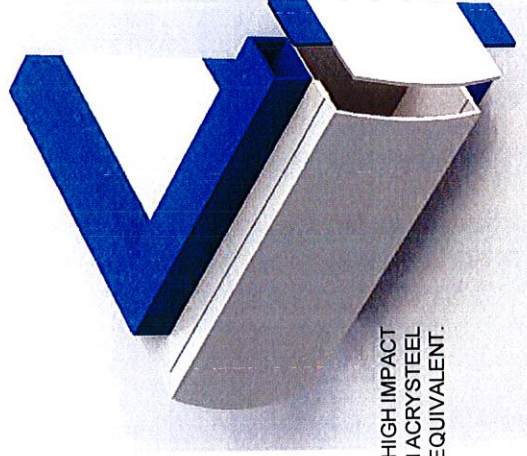


Top View



Corner Section - Left Side

Right Side



.125" THK, #7328 WHITE HIGH IMPACT ACRYLIC, ARISTECH ACRYSTEEL OR EQUIVALENT.

8" .063" EXTRUDED ALUMINUM CHANNEL PAINTED WHITE.

2" .063" EXTRUDED ALUMINUM SHAPES PAINTED TO MATCH 3M SAPPHIRE BLUE.

COLOR SCHEDULE



PAINT TO MATCH 3M SAPPHIRE BLUE

UL IS ELECTRIC SIGN LISTED

GROUNDING ELECTRICAL CONNECTIONS

THIS SIGN IS INTENDED TO BE INSTALLED IN ACCORDANCE WITH THE REQUIREMENTS OF ARTICLE 600 OF THE NATIONAL ELECTRICAL CODE. THIS INCLUDES PROPER GROUNDING AND BONDING OF THE SIGN.

NOTES:
• 7'-0" LONG UNITS W/90 DEGREE CORNERS

Representation of signage only. See architectural submittal for building elevations



General Roadside Sign Specifications (Pylon and Monument - N)

SPECIFICATIONS:

- Standard Sign SF -
 - Horizontal: 35, 50, 65, 75, 100, 125, 150, 200, 250, 300, 500.
 - Vertical: 35, 50, 65, 75, 100, 125, 150, 200, 250, 300, 500.
- Sign square footage and dimensions to be determined by jurisdiction.
- RaceTrac logo and price signs to be read from left to right (both sides).
- Cabinet faces: See specifications sections on each sign.
- Sign support: to be determined by location (direct burial).
- Sign foundation: to be determined by location.
- All sign components to be U.L. listed. All wiring to be U.L. specs. Installation to be per N.E.C. All signs to have U.L. labels.

LED SPECIFICATIONS:

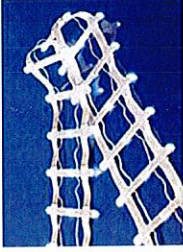
- Available LED sizes (inch): 10, 16, 20, 24, 28, 32, 36, 40, 48, 61, 76.
- Price changers: Sunshine LED specifications. Supplied by owner and installed by sign vendor.
- Hard wired connection. Conduit and cable to be installed by GC (must be dedicated circuits with their own neutrals and ground wires for each).

SIGN VENDOR RESPONSIBILITIES:

- Install communication hardware, software, and programming to ensure proper communication with RaceTrac Verifone POS system.
- LED price sign package to be installed into cabinet by sign vendor.
- LED sign to be tested prior to store opening.

50 SF Price Sign - 28" & 10" LED (N)

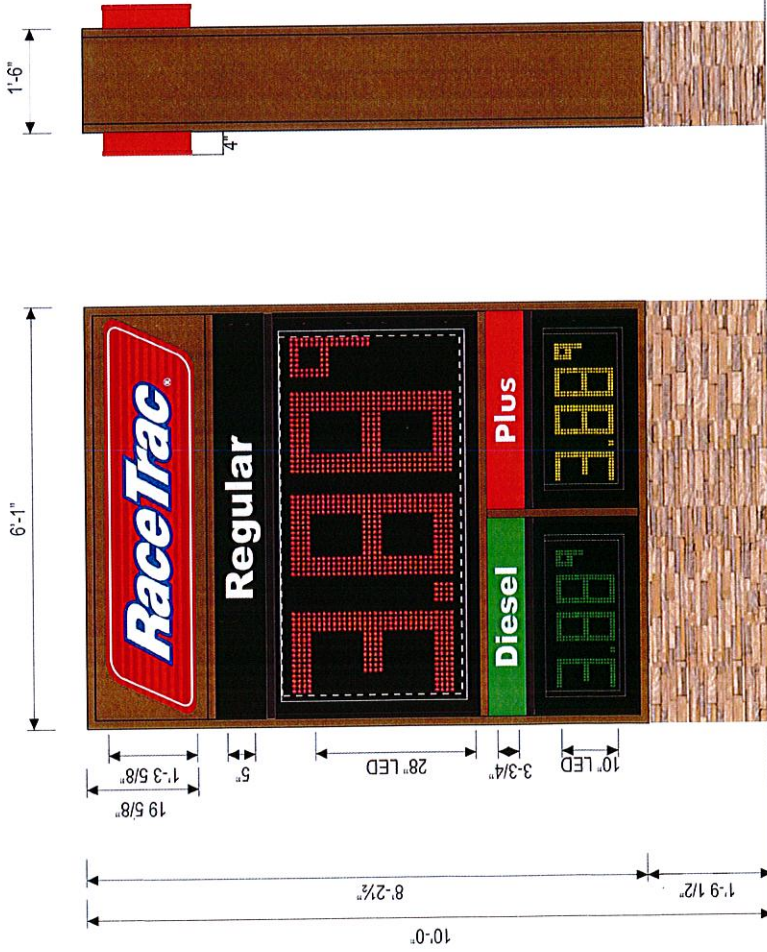
*All sign components to be UL listed. All wiring to conform to UL specifications. Installation to be per NEC requirements. All signs to bear UL labels.



Sloan Sign Box II
LED Interior Illumination

E85

Note: If E85 Fuel Product is required use 3M Translucent Yellow Vinyl 3630-015, (PMS 109 Yellow) Background Color with Black Text Color, Arial Black Letter Font.



FRONT ELEVATION

SIDE VIEW

Revised: additional stone added

Specifications:

Sign Faces:

- Logo panel: Bronze aluminum panel with parallelogram mounted to the surface. Parallelogram to be channel letter-type construction with .177" thick Polycarbonate face panels with 2nd surface applied translucent vinyl graphics. Parallelogram copy to be digitally printed red background stripes and white border with blue area of logo graphic also printed. Cabinet and trim cap to be red to match Axzo Nobel #SIGN20448.
- Regular Unleaded Product Panel: Solar Grade Polycarbonate; Background to be 1st surface applied 3M vinyl opaque 180C-22 Matte Black; "Regular" to be show-through white or 1st surface applied 3M vinyl translucent 3630-020 White.
- Diesel Product Panel: Solar Grade Polycarbonate; Background to be 1st surface applied 3M vinyl translucent 3630-26 Green; "Diesel" to be show-through white or 1st surface applied 3M vinyl translucent 3630-020 White.
- Plus Product Panel: Solar Grade Polycarbonate; background to be 1st surface applied 3M vinyl translucent 3630-33 Red; "Plus" to be show-through white or 1st surface applied 3M vinyl translucent 3630-020 White.

Interior Illumination: Sloan Sign Box II LED Interior Illumination powered by low voltage power supplies. This is behind fuel grade panels, only.
Sign Frame: 2" x 2" x .25" steel tube with .063 aluminum cladding. Extruded aluminum 1-1/2" wide Divider Bars installed to retain sign panels. Face dividers and retainer to be painted dark bronze and black.
Sign Support: Internal steel pipe support to be welded to steel saddle bracket at top and bottom of sign frame.
External steel sign support to meet building and local sign codes. Size of steel and footing as required per site requirements.

Representation of signage only. See architectural submittal for building elevations

RaceTrac

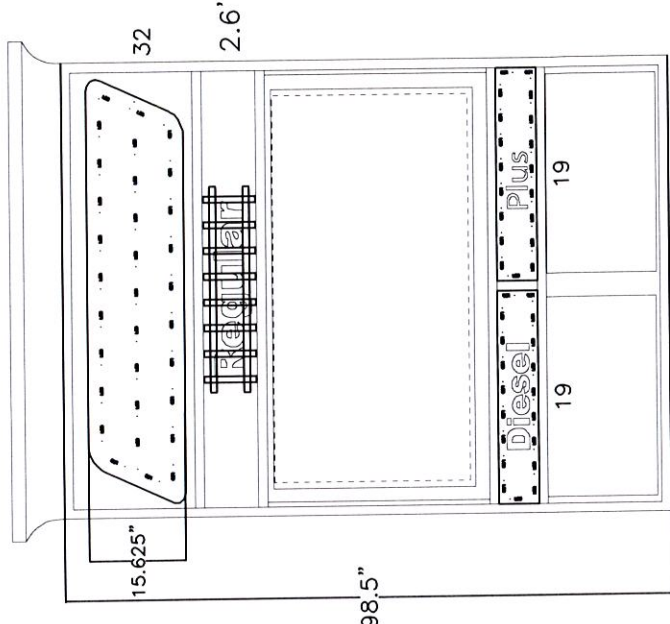
50 SF Price Sign - 28" & 10" LED (N)

*All sign components to be UL listed. All wiring to conform to UL specifications. Installation to be per NEC requirements. All signs to bear UL labels.



STRUCTURAL SUPPORT GUIDELINES FOR SIGNBOX II LIGHT:
 VERTICAL MOUNTING: SPACE SUPPORTS AT EVEN INTERVALS, BUT NO FURTHER APART THAN 8" (2.4M)
 HORIZONTAL MOUNTING: SPACE SUPPORTS AT EVEN INTERVALS, BUT NO FURTHER APART THAN 4" (1.2M)
 FOR BEST RESULTS THE SIGNBOX II LIGHTS HAVE BEEN PLACED IN THE SIGN:
 VERTICALLY
 HORIZONTALLY

- 1) SignBox II LIGHTS LAID OUT 12" CENTER TO CENTER
- 2) EACH MODULAR 60 POWER SUPPLY CAN RUN UP TO 20' SINGLE SIDED SignBox II LIGHTS
- 3) LAYOUT BASED ON THE SIGNBOX II BEING MOUNTED 5"-12" FROM THE FACE MATERIAL
- 4) ALL DIMENSIONS ARE IN INCHES UNLESS OTHERWISE STATED
- 1) ACTUAL CHANNEL LETTER POPULATION AND PRODUCT PLACEMENT MAY VARY FROM THIS LAYOUT
- 2) a. VL PLUS 2 WHITE 6500K LONG LAID OUT AT 2.0 MODULES PER FOOT, 5.0" ON CENTER - CABINET
 b. VL PLUS 2 WHITE 6500K SHORT LAID OUT AT 2.5 MODULES PER FOOT, 5.0" ON CENTER - DIESEL/PLUS
- 3) EACH MODULAR 60 POWER SUPPLY CAN RUN UP TO 100 VL PLUS 2 WHITE 6500K LONG/SHORT MODULES
- 4) LAYOUT BASED ON 4" CAN DEPTH
- 5) DIMENSIONS ARE IN INCHES UNLESS STATED OTHERWISE
- 6) 701269-6WLA2-MB WATTS PER MODULE: .54; 701269-6WSA2-MB WATTS PER MODULE
- 7) PRIMARY SYSTEM POWER: 94.50 WATTS
- 8) LED MODULE POWER USAGE(secondary): 75.6 WATTS



ESTIMATED PRODUCT B.O.M. PER DOUBLE SIDED SIGN:	
64	Each VL Plus 2 White 6500K Long Modules - 32'
PN:	701269-6WLA2-MB
76	Each VL Plus 2 White 6500K Short Modules - 31'
PN:	701269-6WSA2-MB
2	Each Modular 60 Power Supplies 12VDC
1	Each 100' Roll of Jacketed Cable
ESTIMATED PRODUCT B.O.M. PER DOUBLE SIDED SIGN:	
5.3'	Each 701946-6WS201 - Single Sided SignBox II (Sold in Cartons of 20' Each)
2	Each 701507-MODW - Modular 60 Power Supply 12VDC
(16	Each Clamps - P/N 410155 16 included with each 20' length)
1	Each 100' Roll of Jacketed Cable
OPTIONAL MOUNTING HARDWARE:	
1	Each 401330-10 - 10 Each Bag of Couplers
1	Each 401309-10 - 10 Each Bag of Mounting Brackets
DRAWN	DATE
KM/DH	10/30/2014
JOB NUMBER	21687
RACETRAC PYLON VERTICAL	
50 SQ FT	

- 1) This design and drawing are proprietary and the property of SloanLED. Any reproduction or use without prior written approval is prohibited.
- 2) ChannelLED & SignBox II modules and power supply quantities are ESTIMATES ONLY and are based on the supplied information and drawings. Channel letter depth, lens color, material and thickness can vary, which may lead to an increase or decrease in product at the time of installation. To ensure accurate product requirements, it is recommended that product is tested using customer's specific lens material and letter configuration.
- 3) SloanLED highly recommends applying Light Enhancement Point (LEP) or Light Enhancement Film (LEF) inside channel letters for optimal illumination.
- 4) Jacketed cable estimated assumes maximum run length of 15' per leg of the power supply.

Representation of signage only. See architectural submittal for building elevations

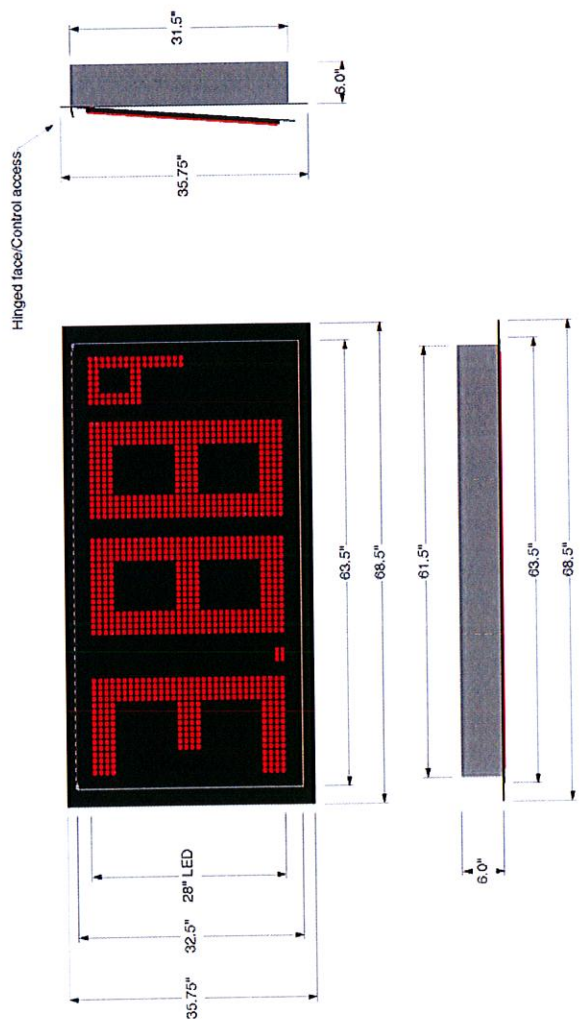


CLIENT: RaceTrac	SALES REP: Mark Allaman
CUSTOMER APPROVAL:	DATE: Sept 19, 2013
SHIP TO LOCATION:	INSTALL LOCATION:
DATE:	DATE:
REVISIONS:	DATE:

CLIENT CONTACT INFO:	SHIP TO LOCATION:
CUSTOMER APPROVAL:	DATE:

RTV_50SF_28r_10ga

For install help call: 800-821-9013 ext. 4216



CABINET & DIGIT SPECS:	28" LED
Digit Size & Style:	Red
Digit Color:	35.75" h x 68.5" w x 6" d
Overall Cabinet Size:	Black
Cabinet Color:	Double
Single or Double Face:	

LABEL SPECS:	NA
---------------------	----

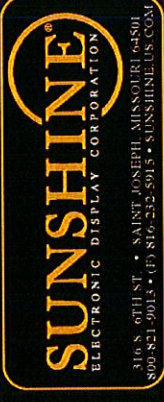
- OTHER:**
- Warranty: 2 year on-site parts/labor
 - Control: Wireless POS with Handheld backup
 - Constant Hot AC Power must be provided by others
 - Crane truck/crew must be provided by others

This special drawing is shown as part of a plan, elevation, and section. It is not to be used for construction or installation without the approval of Sunshine Electronic Display Corporation or its authorized agent. All installation details are suggested only. All signs must be installed in accordance with NATIONAL FIRE ELECTRICAL AND BILLING CODE (NFPA 70) and applicable local codes. Sunshine Electronic Display Corporation is not responsible for any electrical work. There are the sole responsibility of the installer.

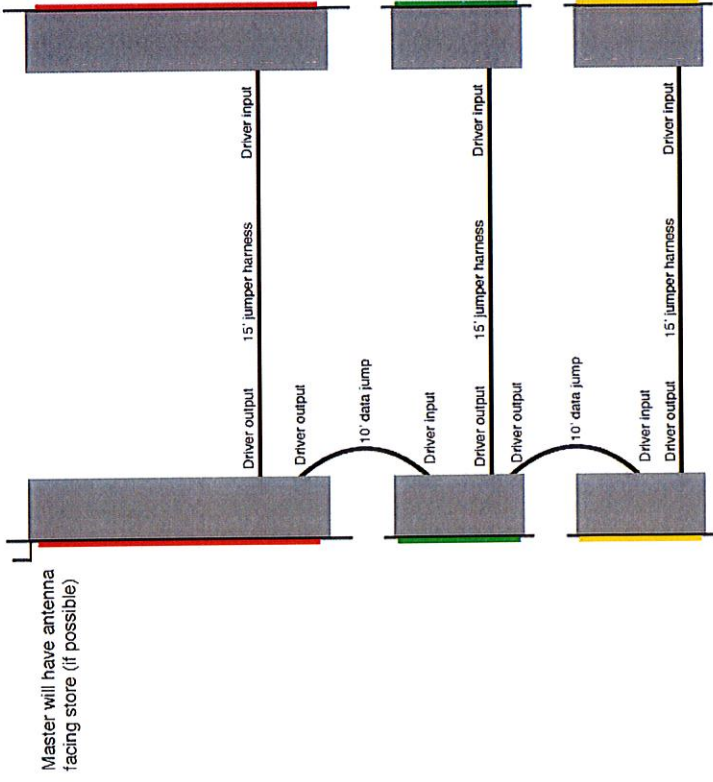
Actual LED type and configuration may vary.

UL LISTED
UL TYPE NUMBER: E84094
UL FILE NUMBER: E84094
UL CERTIFIED TO: UL 1773-1413
UL CERTIFIED TO: UL 1773-1413



 <p>316 S. 6TH ST. • SAINT JOSEPH, MISSOURI 64501 800-821-9013 • (417) 816-2522 • 5915 • SUNSHINE.US.COM</p>		<p>CLIENT: RaceTrac</p> <p>CLIENT CONTACT INFO</p>	<p>SALES REP: Mark Allaman</p> <p>INSTALL LOCATION: 50 sq ft vertical pylon sign</p>	<p>Job #:</p> <p>DATE: Sept 19, 2013</p>
<p>CUSTOMER APPROVAL:</p>		<p>SHIP TO LOCATION:</p>	<p>DATE:</p>	<p>REVISIONS:</p>

RTV_50SF_28r_10ga
For install help call: 800-821-9013 ext. 4216





POS wireless board mounted in store



15 amp 120V circuit on 24 hours connected to each box.

Junction boxes located inside cabinet.

Must be dedicated circuit and have their own neutral and ground

<p>CABINET & DIGIT SPECS:</p>	<p>OTHER:</p> <ul style="list-style-type: none"> • Warranty: 2 year on-site parts/labor • Control: Wireless POS with Handheld backup • Constant Hot AC Power must be provided by 'others' • Crane truck/crew must be provided by 'others'
<p>LABEL SPECS:</p>	<p>This original drawing is provided as part of a planned project and is not to be exhibited, reproduced, or used for any other project without the express written consent of the Corporation or its authorized agent. All installation details are suggested only. All items must be recalled in accordance with NATIONAL, STATE, ELECTRICAL, AND BUILDING CODES. Sunshine Electronic Display Corporation has no responsibility for wind loads. These are the sole responsibility of the Buyer/Owner.</p> <p>   </p> <p> <small>UL LISTED</small> <small>UL 1774</small> <small>UL 1774-1</small> <small>UL 1774-2</small> <small>UL 1774-3</small> <small>UL 1774-4</small> <small>UL 1774-5</small> <small>UL 1774-6</small> <small>UL 1774-7</small> <small>UL 1774-8</small> <small>UL 1774-9</small> <small>UL 1774-10</small> <small>UL 1774-11</small> <small>UL 1774-12</small> <small>UL 1774-13</small> <small>UL 1774-14</small> <small>UL 1774-15</small> <small>UL 1774-16</small> <small>UL 1774-17</small> <small>UL 1774-18</small> <small>UL 1774-19</small> <small>UL 1774-20</small> <small>UL 1774-21</small> <small>UL 1774-22</small> <small>UL 1774-23</small> <small>UL 1774-24</small> <small>UL 1774-25</small> <small>UL 1774-26</small> <small>UL 1774-27</small> <small>UL 1774-28</small> <small>UL 1774-29</small> <small>UL 1774-30</small> <small>UL 1774-31</small> <small>UL 1774-32</small> <small>UL 1774-33</small> <small>UL 1774-34</small> <small>UL 1774-35</small> <small>UL 1774-36</small> <small>UL 1774-37</small> <small>UL 1774-38</small> <small>UL 1774-39</small> <small>UL 1774-40</small> <small>UL 1774-41</small> <small>UL 1774-42</small> <small>UL 1774-43</small> <small>UL 1774-44</small> <small>UL 1774-45</small> <small>UL 1774-46</small> <small>UL 1774-47</small> <small>UL 1774-48</small> <small>UL 1774-49</small> <small>UL 1774-50</small> <small>UL 1774-51</small> <small>UL 1774-52</small> <small>UL 1774-53</small> <small>UL 1774-54</small> <small>UL 1774-55</small> <small>UL 1774-56</small> <small>UL 1774-57</small> <small>UL 1774-58</small> <small>UL 1774-59</small> <small>UL 1774-60</small> <small>UL 1774-61</small> <small>UL 1774-62</small> <small>UL 1774-63</small> <small>UL 1774-64</small> <small>UL 1774-65</small> <small>UL 1774-66</small> <small>UL 1774-67</small> <small>UL 1774-68</small> <small>UL 1774-69</small> <small>UL 1774-70</small> <small>UL 1774-71</small> <small>UL 1774-72</small> <small>UL 1774-73</small> <small>UL 1774-74</small> <small>UL 1774-75</small> <small>UL 1774-76</small> <small>UL 1774-77</small> <small>UL 1774-78</small> <small>UL 1774-79</small> <small>UL 1774-80</small> <small>UL 1774-81</small> <small>UL 1774-82</small> <small>UL 1774-83</small> <small>UL 1774-84</small> <small>UL 1774-85</small> <small>UL 1774-86</small> <small>UL 1774-87</small> <small>UL 1774-88</small> <small>UL 1774-89</small> <small>UL 1774-90</small> <small>UL 1774-91</small> <small>UL 1774-92</small> <small>UL 1774-93</small> <small>UL 1774-94</small> <small>UL 1774-95</small> <small>UL 1774-96</small> <small>UL 1774-97</small> <small>UL 1774-98</small> <small>UL 1774-99</small> <small>UL 1774-100</small> </p>