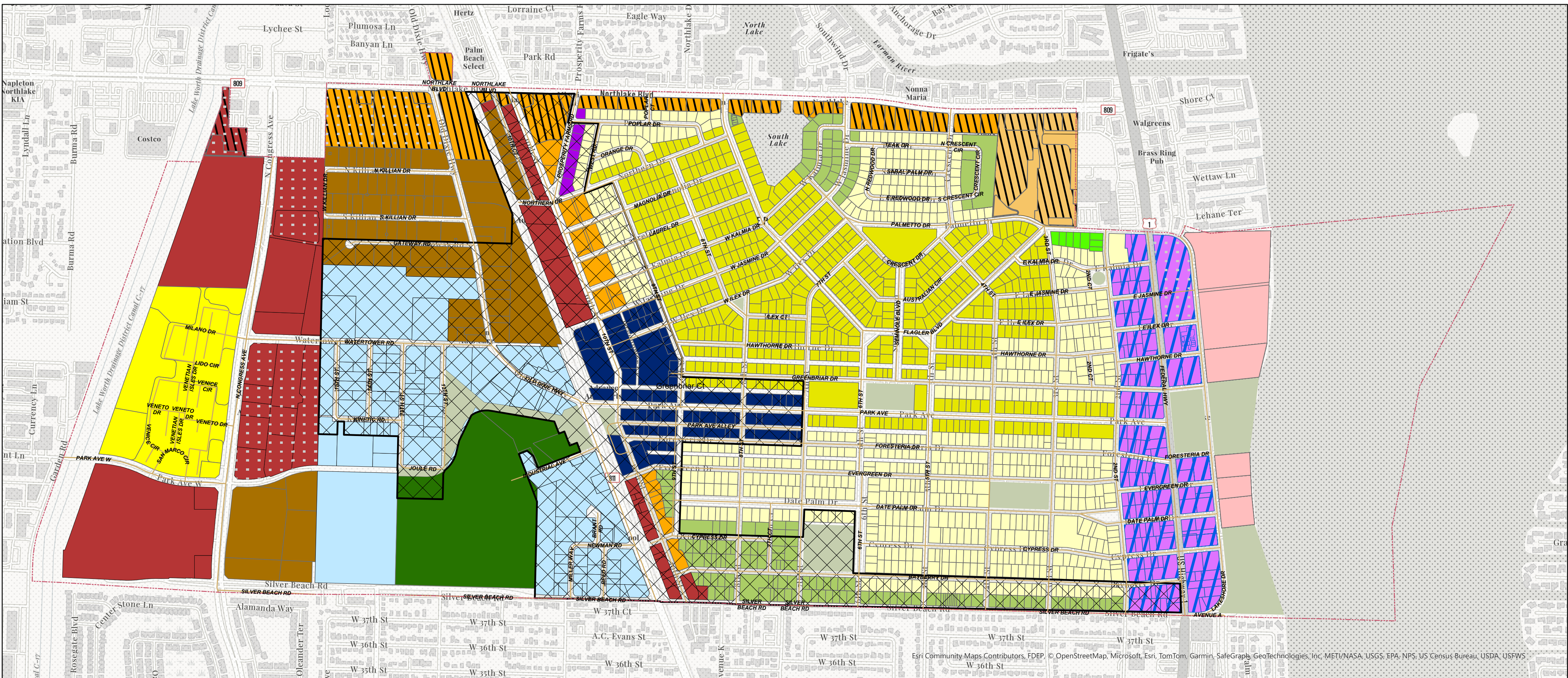
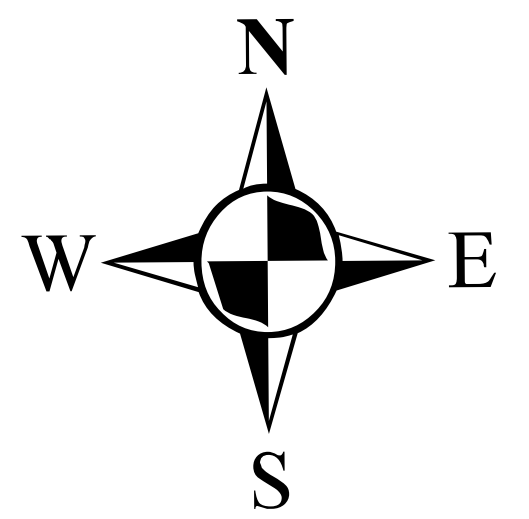




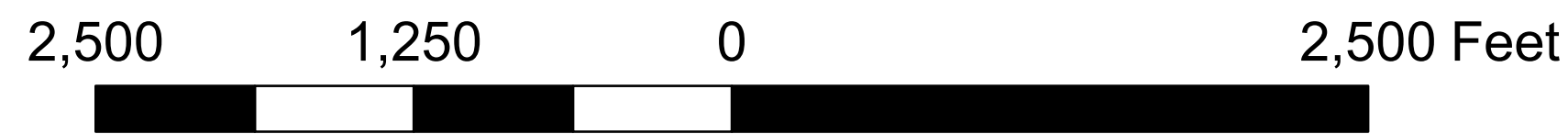
Town of Lake Park Zoning Map



Legend		Zoning Districts	
	NBOZ Overlay		C1 BUSINESS DISTRICT
	PUD Overlay		C1B NEIGHBORHOOD COMMERCIAL DISTRICT
	Town_Boundary		C2 BUSINESS DISTRICT
	Center Lines		C3 TWIN CITIES MIXED USE DISTRICT
	FHMUDO Overlay		C4 BUSINESS DISTRICT
	CRA District		CLIC CAMPUS LIGHT INDUSTRIAL & COMMERCIAL
			CONSERVATION
			MU MIXED USE
			P PUBLIC DISTRICT
			PADD PARK AVENUE DOWNTOWN DISTRICT
			R1 SINGLE FAMILY RESIDENCE DISTRICT
			R1A SINGLE FAMILY RESIDENCE DISTRICT
			R1AA RESIDENCE DISTRICT
			R1B TWO FAMILY RESIDENCE DISTRICT
			R2 MULTIPLE FAMILY RESIDENCE DISTRICT
			TND TOWNHOME DEVELOPMENT



Anders Viane - Planner
 Community Development Department
 Town of Lake Park
 535 Park Avenue, Lake Park FL 33403
 561-881-3320 (ext 320)
 aviane@lakeparkflorida.gov



Date: 6/14/24