

## HOLIDAY LIGHTING AND DECORATING SERVICES Vendor Questions

238991

- All questions submitted by Kathryn Hernandez at [info@miamichristmaslights.com](mailto:info@miamichristmaslights.com)  
([kathryn@miamichristmaslights.com](mailto:kathryn@miamichristmaslights.com))

1. How many poles are there to get Pole mount décor?

Answer: There is a total of twenty-one (21) poles to be decorated with pole mount holiday décor.

2. How many poles are there to get Light wraps? is it 42 poles total?

Answer: There is a total of twenty-one (21) poles total to be decorated with holiday light wraps.

3. What are light wraps?

Answer: The term "light wrap" refers to a typical holiday (LED) light string, such as the one shown below, which excludes a garland treatment. The bulb colors must be white to match that of the lights on the pole mount holiday décor. Additionally, the light wrap must have green string to match the colors of the poles.

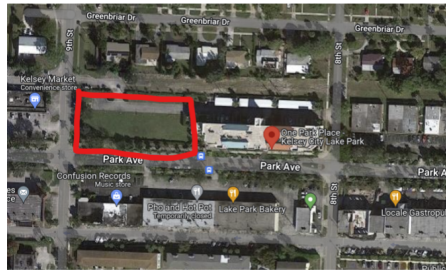


4. Where is the power outlet for the light poles?

Answer - The power outlets are located at the base of each light pole.

5. Where exactly is the Town Green?

Answer - Town Green is located in the CRA Downtown District, adjacent to (west of) address 801 Park Avenue, Lake Park, FL 33403. The following location depicts the Town Green (red frame).



6. Is the Town Green part of the town hall property?

Answer - No, the Town Green is a geographically separated site and is not part the Town Hall.

7. On Exhibit A, what goes on with pole 1 where are these poles located?

Answer - Photo 1 on Exhibit A depicts the structural/material makeup of the poles on Park Avenue that are to be decorated. Each of the twenty-one (21) poles must receive one (1) pole mount display and one (1) holiday light wrap. The mount displays must feature white LED lighting and finish. The light wraps must feature white (LED) lighting with green string.